

FOR LEASE

2,160 SF Retail / Office / Medical

97 Hilltop Village Center, Eureka MO 63025

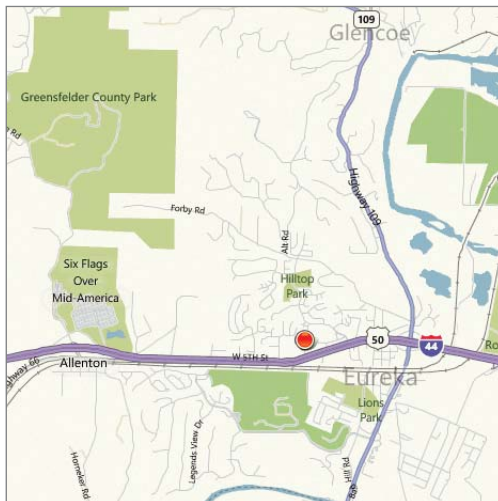


U.S. Census Demographics

	1 Mile	3 Miles	5 Miles
Population	3,614	12,718	25,571
Households	1,186	4,103	8,204
Avg HH Inc \$	\$130,162	125,304	120,241

Traffic Counts

- 56,071 VPD on I-44
- 21,649 VPD on Hwy 109



Property Highlights

- 2,160 SF available for retail, office or medical user
- New roof
- Numerous amenities nearby including: Schnucks, Wal-Mart, True Value, Arby's, Culver's, Pizza Hut, Ponderosa & McDonalds
- Great access to I-44

Lease Rate

\$9.00 psf, NNN



Commercial Real Estate Services, Worldwide.

Contact

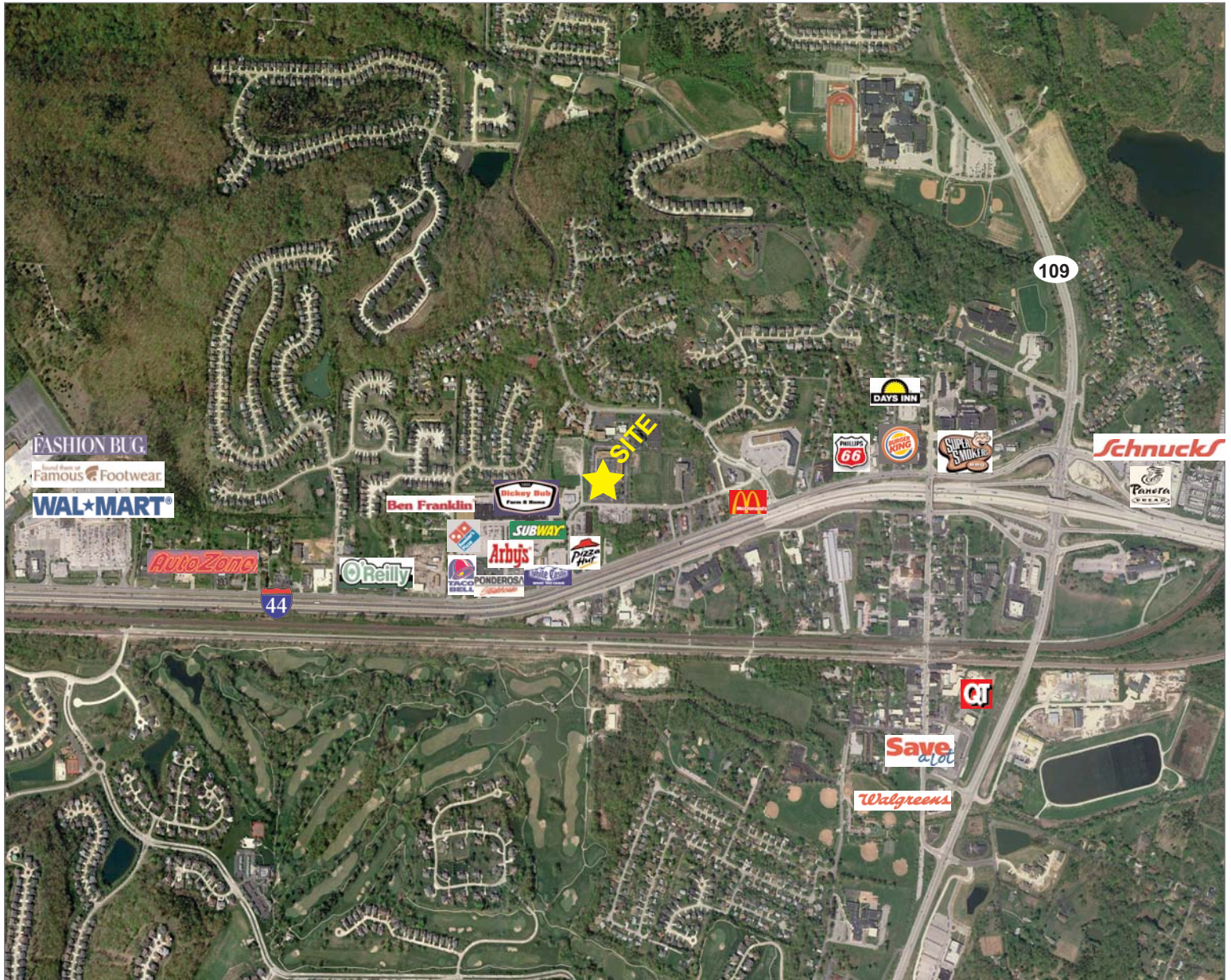
John McDonald
314 994 2325
jmcdonald@naidesco.com

The information contained herein has been given to us by the owner of the property or other sources we deem reliable. We have no reason to doubt its accuracy, but we do not guarantee it. All information should be verified prior to lease or purchase.

8235 Forsyth Blvd Ste 210 | St Louis MO 63105
Phone 314 994 4444 | Fax 314 994 4088
www.naidesco.com | info@naidesco.com

SURROUNDING RETAILERS

97 Hilltop Village Center, Eureka MO 63025



NAIDESCO
Commercial Real Estate Services, Worldwide.

Contact

John McDonald
314 994 2325
jmcdonald@naidesco.com

The information contained herein has been given to us by the owner of the property or other sources we deem reliable. We have no reason to doubt its accuracy, but we do not guarantee it. All information should be verified prior to lease or purchase.

8235 Forsyth Blvd Ste 210 | St Louis MO 63105
Phone 314 994 4444 | Fax 314 994 4088
www.naidesco.com | info@naidesco.com