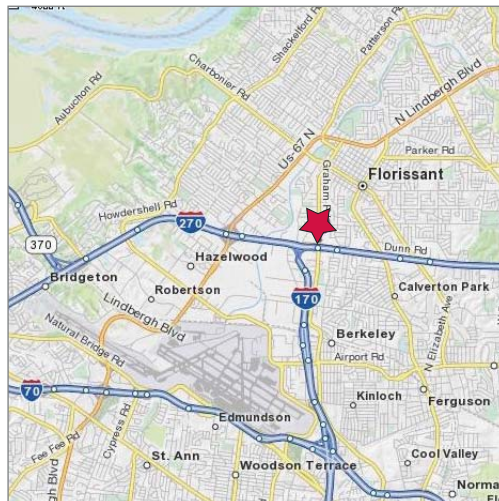


# FOR LEASE

## 7,400 SF Medical Office Building

1265-B Graham Rd, Florissant MO 63031



### Property Highlights

- 7,400 SF proposed medical office building
- Plans are completed and construction is bid
- Building is to be delivered with "white box" finish
- Over 6.75 parking spaces per 1,000 SF leased

### Lease Rate

\$15.00 psf, NNN

### Contact



Commercial Real Estate Services, Worldwide.

Andy Murphy  
314 994 4093  
amurphy@naidesco.com

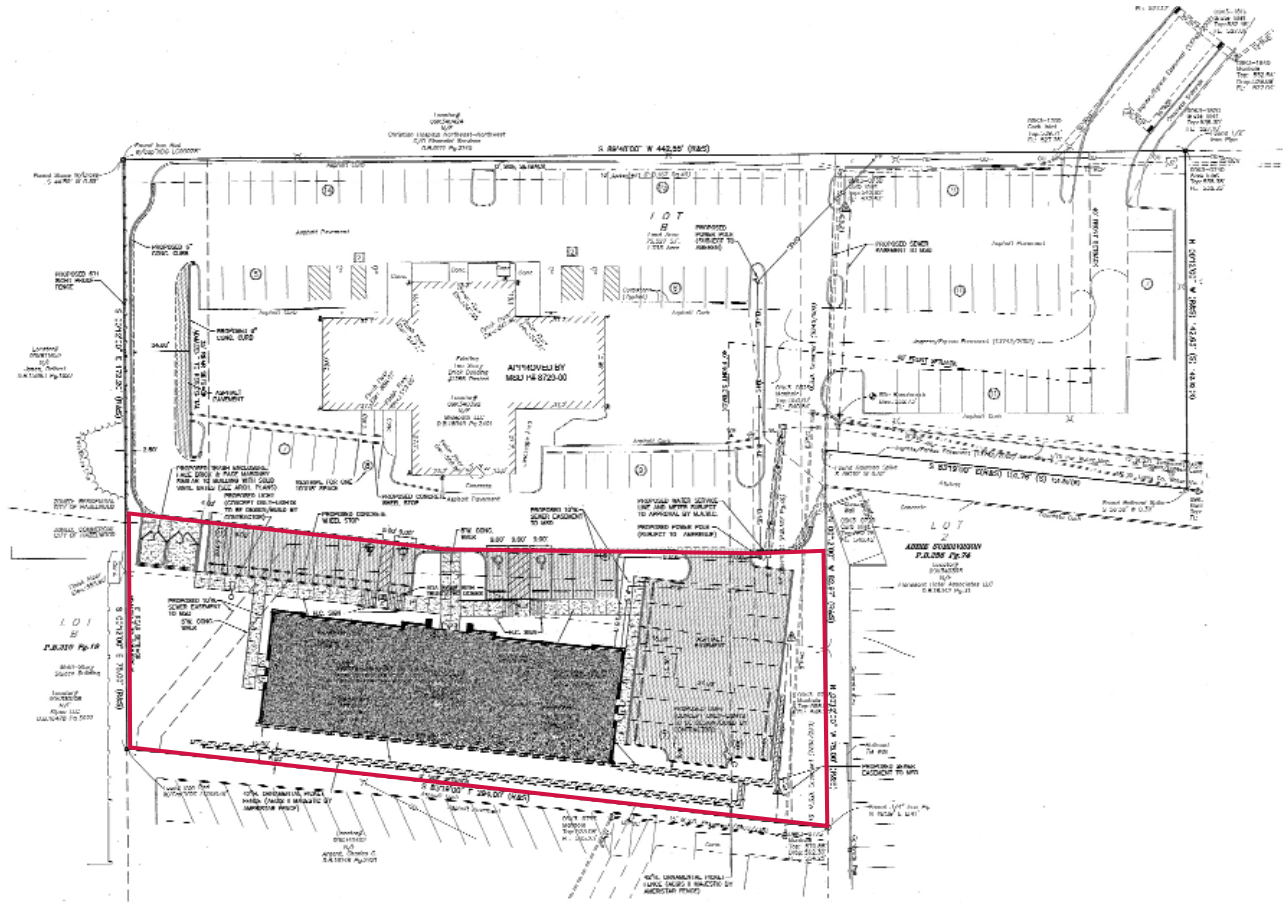
Dan Hayes  
314 994 4068 Direct  
314 401 4944 Mobile  
dhayes@naidesco.com

The information contained herein has been given to us by the owner of the property or other sources we deem reliable. We have no reason to doubt its accuracy, but we do not guarantee it. All information should be verified prior to lease or purchase.

8235 Forsyth Blvd Ste 210 St Louis MO 63105  
Phone 314 994 4444 Fax 314 994 4088  
www.naidesco.com

# IMPROVEMENT PLANS

1265-B Graham Rd, Florissant MO 63031



## Contact

**NAIDESCO**

Commercial Real Estate Services, Worldwide.

Andy Murphy  
314 994 4093  
amurphy@naidesco.com

Dan Hayes  
314 994 4068 Direct  
314 401 4944 Mobile  
dhayes@naidesco.com

The information contained herein has been given to us by the owner of the property or other sources we deem reliable. We have no reason to doubt its accuracy, but we do not guarantee it. All information should be verified prior to lease or purchase.

8235 Forsyth Blvd Ste 210 St Louis MO 63105  
Phone 314 994 4444 Fax 314 994 4088  
www.naidesco.com