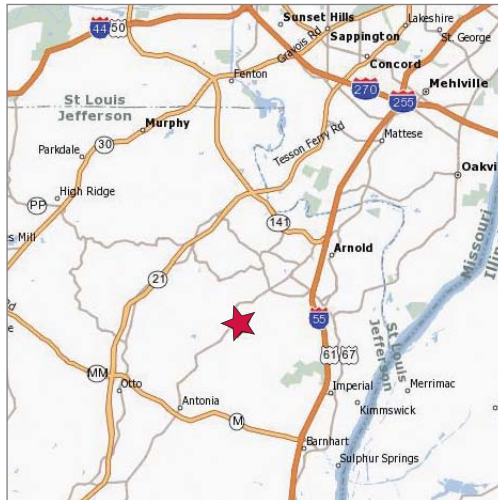


INVESTMENT SALE

Fully Leased Daycare Facility

2862 Seckman, Imperial MO 63052



Property Highlights

- 9,600 SF building currently occupied by a daycare
- Located on 1.05 acres
- Built in 2007
- Long term lease in place
- Cap rate: 8.75 (approx.)

Sale Price

\$1,600,000

Contact



Commercial Real Estate Services, Worldwide.

Terry O'Connell
314 994 4800
toconnell@naidesco.com

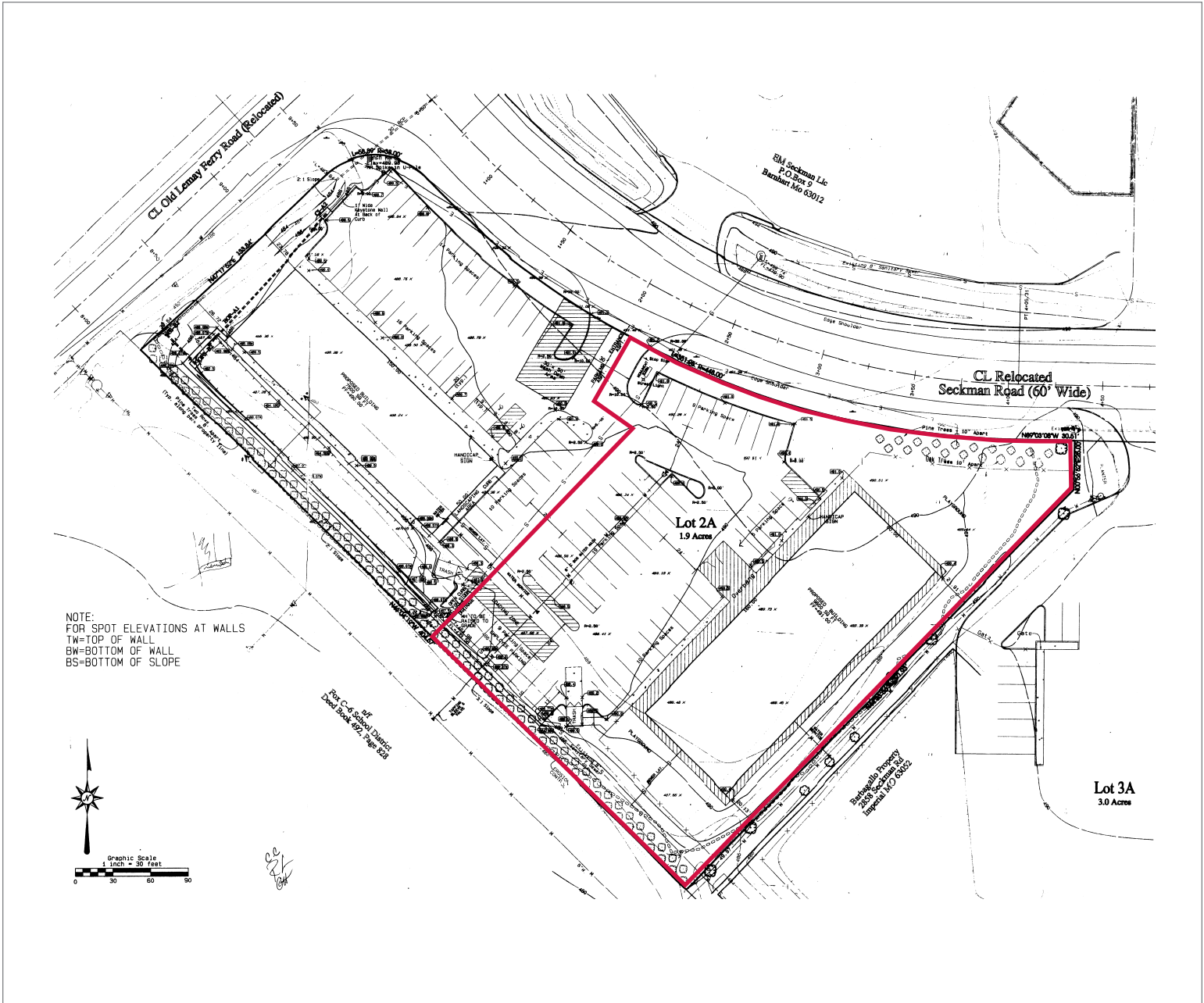
Dan Hayes
314 994 4068 Direct
314 401 4944 Mobile
dhayes@naidesco.com

The information contained herein has been given to us by the owner of the property or other sources we deem reliable. We have no reason to doubt its accuracy, but we do not guarantee it. All information should be verified prior to lease or purchase.

8235 Forsyth Blvd Ste 210 St Louis MO 63105
Phone 314 994 4444 Fax 314 994 4088
www.naidesco.com

SITE PLAN

2862 Seckman, Imperial MO 63052



Contact

NAIDESCO

Commercial Real Estate Services, Worldwide.

Terry O'Connell
314 994 4800
toconnell@naidesco.com

Dan Hayes
314 994 4068 Direct
314 401 4944 Mobile
dhayes@naidesco.com

The information contained herein has been given to us by the owner of the property or other sources we deem reliable. We have no reason to doubt its accuracy, but we do not guarantee it. All information should be verified prior to lease or purchase.

8235 Forsyth Blvd Ste 210 St Louis MO 63105
Phone 314 994 4444 Fax 314 994 4088
www.naidesco.com