

FOR SALE

2,432 SF Freestanding Retail Building

9631 Manchester Rd, Rock Hill MO 63119

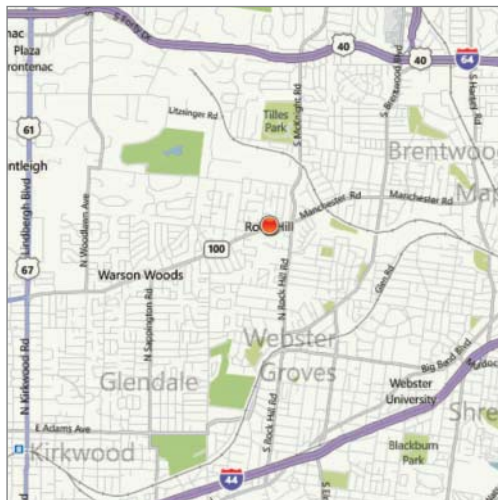


U.S. Census Demographics

	1 Mile	3 Miles	5 Miles
Population	9,663	89,712	264,249
Households	4,101	40,503	118,651
Avg HH Inc.	\$85,153	94,326	84,349

Traffic Counts

- 23,540 VPD on Manchester Rd



Property Highlights

- 2,432 SF former Imo's Pizza building on 0.43 acre
- Pylon signage & patio seating
- 90' of frontage on Manchester Rd
- New development east of property to be complete in 2012
- Located in high traffic retail corridor

Sale Price

\$496,000



Commercial Real Estate Services, Worldwide.

Contact

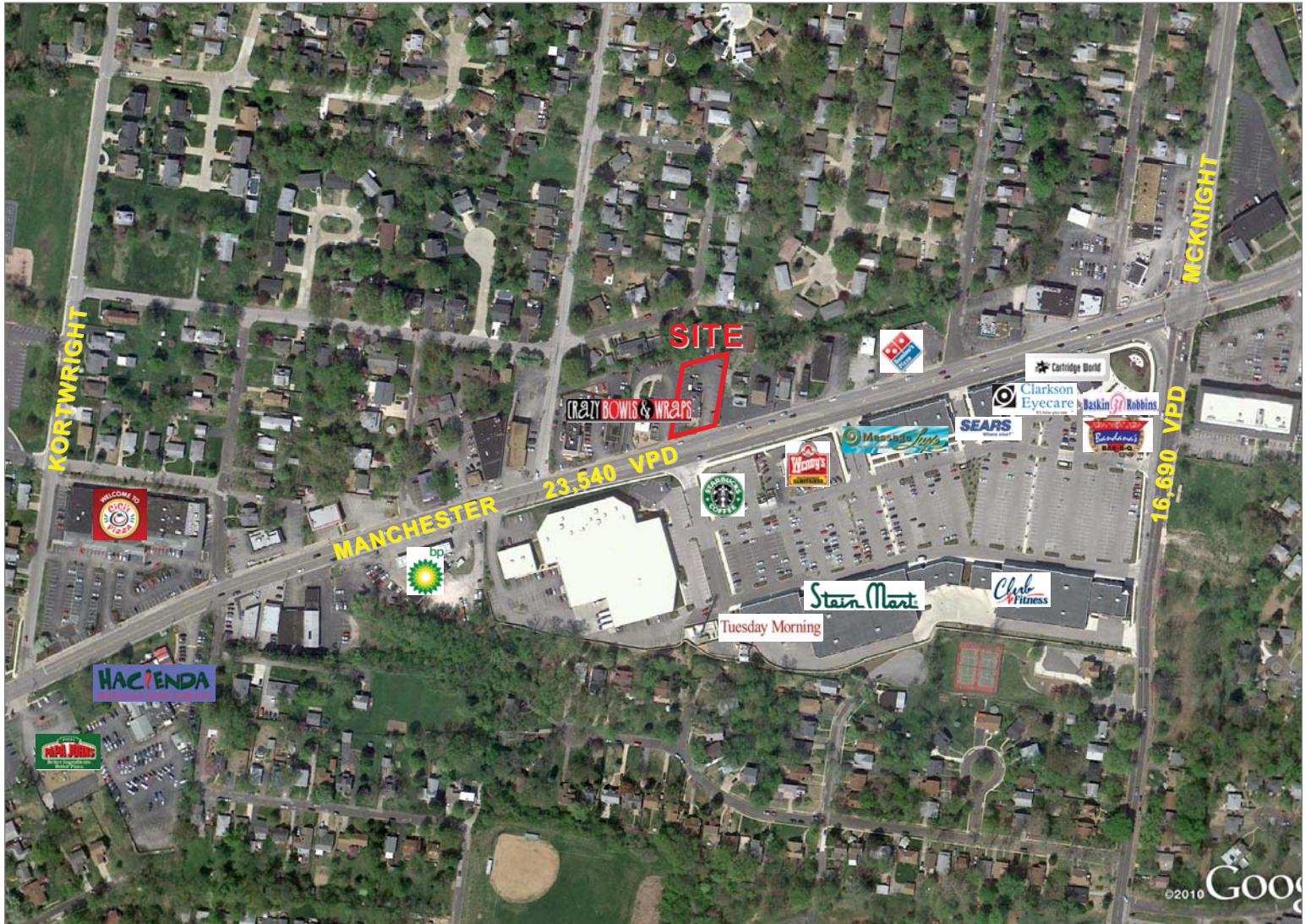
John Shuff
314 994 4943
jshuff@naidesco.com

The information contained herein has been given to us by the owner of the property or other sources we deem reliable. We have no reason to doubt its accuracy, but we do not guarantee it. All information should be verified prior to lease or purchase.

8235 Forsyth Blvd Ste 210 | St Louis MO 63105
Phone 314 994 4444 | Fax 314 994 4088
www.naidesco.com | info@naidesco.com

AERIAL

9631 Manchester Rd, Rock Hill MO 63119



Commercial Real Estate Services, Worldwide.

Contact

John Shuff
314 994 4943
jshuff@naidesco.com

The information contained herein has been given to us by the owner of the property or other sources we deem reliable. We have no reason to doubt its accuracy, but we do not guarantee it. All information should be verified prior to lease or purchase.

8235 Forsyth Blvd Ste 210 | St Louis MO 63105
Phone 314 994 4444 | Fax 314 994 4088
www.naidesco.com | info@naidesco.com