

FOR LEASE

1,400 - 3,500 SF Retail / Office Space

625 Salt Lick Rd, St. Peters MO 63376

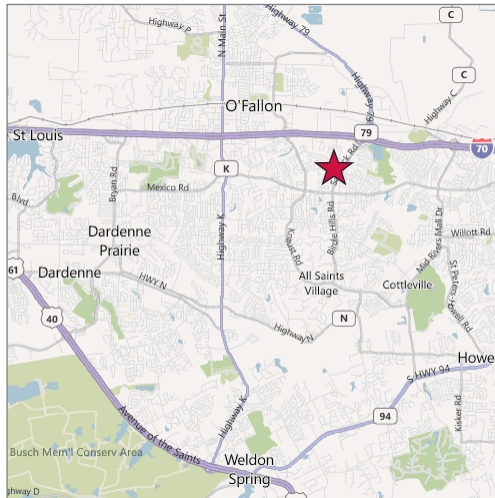


U.S. Census Demographics

	1 Mile	3 Miles	5 Miles
Population	10,921	72,400	166,231
Households	3,757	25,536	58,004
Avg HH Inc.	\$93,254	85,550	89,071

Traffic Counts

- 20,720 VPD on Salt Lick Rd



Property Highlights

- 3,500 contiguous SF available in attractive retail/office center in the Golden Triangle - move in ready
- #629: 1,400 SF
- #633: 1,400 SF
- #635: 2,100 SF
- Great mix of professional & retail
- Building signage available
- 7.35:1,000 parking

New Lease Rate

~~\$12.00~~ **\$10.00 psf** (CAM \$4.50 psf)



Commercial Real Estate Services, Worldwide.

Contact

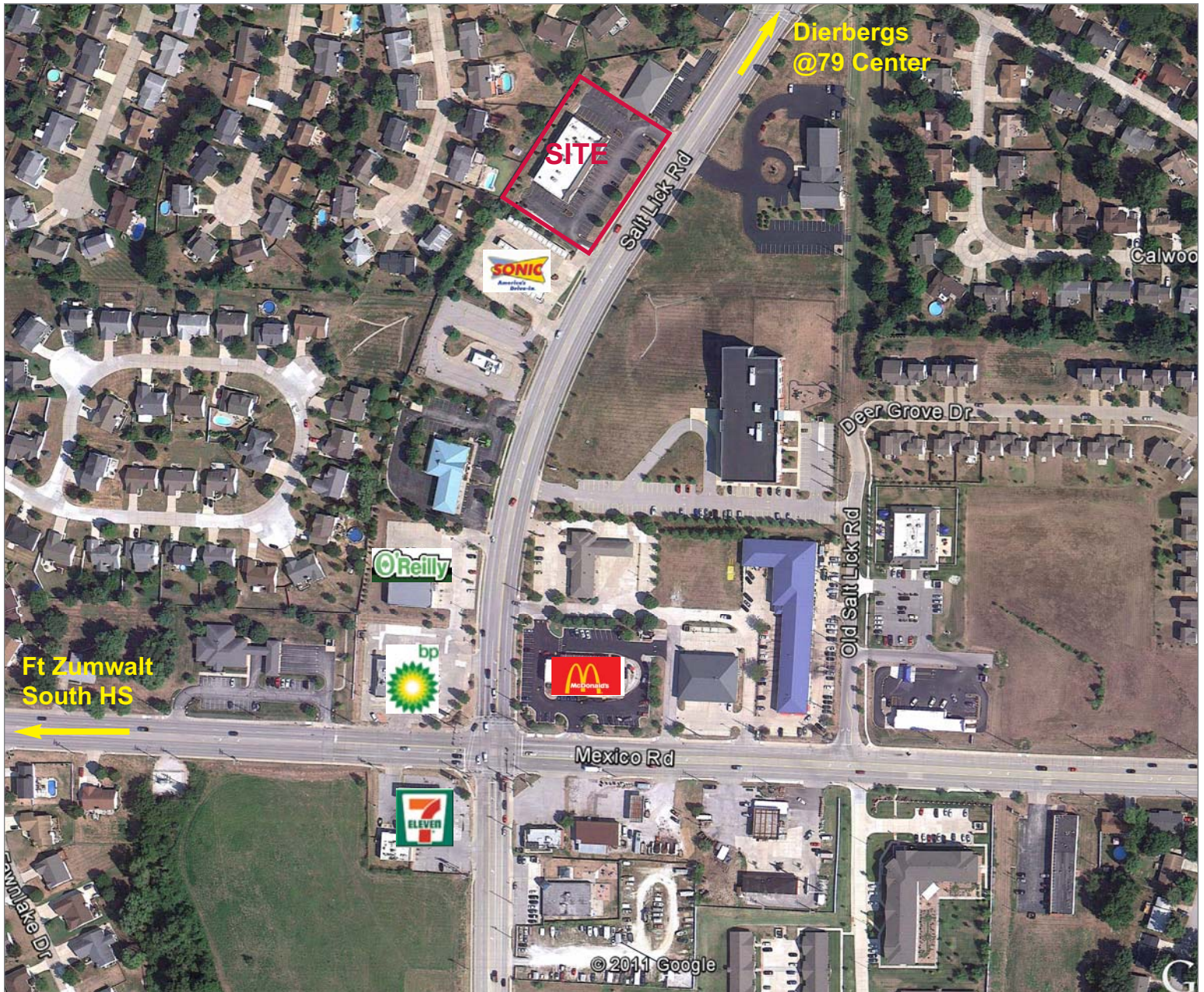
Brenda Lowder
314 994 2327 Direct
314 952 5238 Mobile
blowder@naidesco.com

The information contained herein has been given to us by the owner of the property or other sources we deem reliable. We have no reason to doubt its accuracy, but we do not guarantee it. All information should be verified prior to lease or purchase.

8235 Forsyth Blvd Ste 210 | St Louis MO 63105
Phone 314 994 4444 | Fax 314 994 4088
www.naidesco.com | info@naidesco.com

AERIAL

625 Salt Lick Rd, St. Peters MO 63376



Contact

Brenda Lowder
314 994 2327 Direct
314 952 5238 Mobile
blowder@naidesco.com

NAIDESCO

Commercial Real Estate Services, Worldwide.

The information contained herein has been given to us by the owner of the property or other sources we deem reliable. We have no reason to doubt its accuracy, but we do not guarantee it. All information should be verified prior to lease or purchase.

8235 Forsyth Blvd Ste 210 | St Louis MO 63105
Phone 314 994 4444 | Fax 314 994 4088
www.naidesco.com | info@naidesco.com