

FOR SALE / LEASE Retail Strip Center

14660 Manchester Rd, Ballwin MO 63011

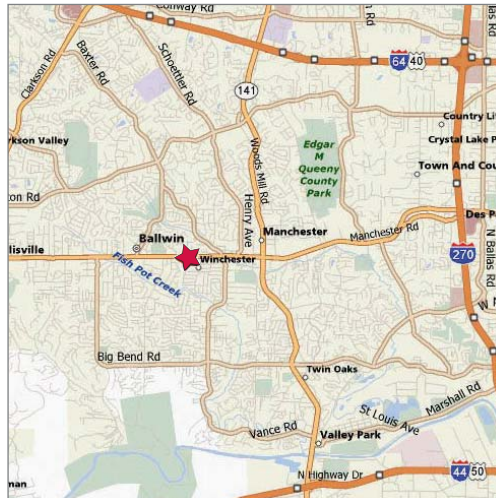


U.S. Census Demographics

	1 Mile	3 Miles	5 Miles
Population	9,930	85,137	162,440
Households	3,818	32,204	60,182
Avg HH Inc.	\$70,280	93,412	113,978

Traffic Counts

- 52,274 VPD on Manchester Rd



Property Highlights

- 15,000 SF available for lease
- 20,000 SF building on 2.2 acres
- Located at a signalized intersection on Manchester Rd
- Abundance of parking
- Great visibility
- Ideal location for redevelopment / tenant / owner-user

Sale Price / Lease Rate

\$2,600,000 / \$12.00 psf, NNN

Contact



Commercial Real Estate Services, Worldwide.

Peter Sheahan
314 994 4081
psheahan@naidesco.com

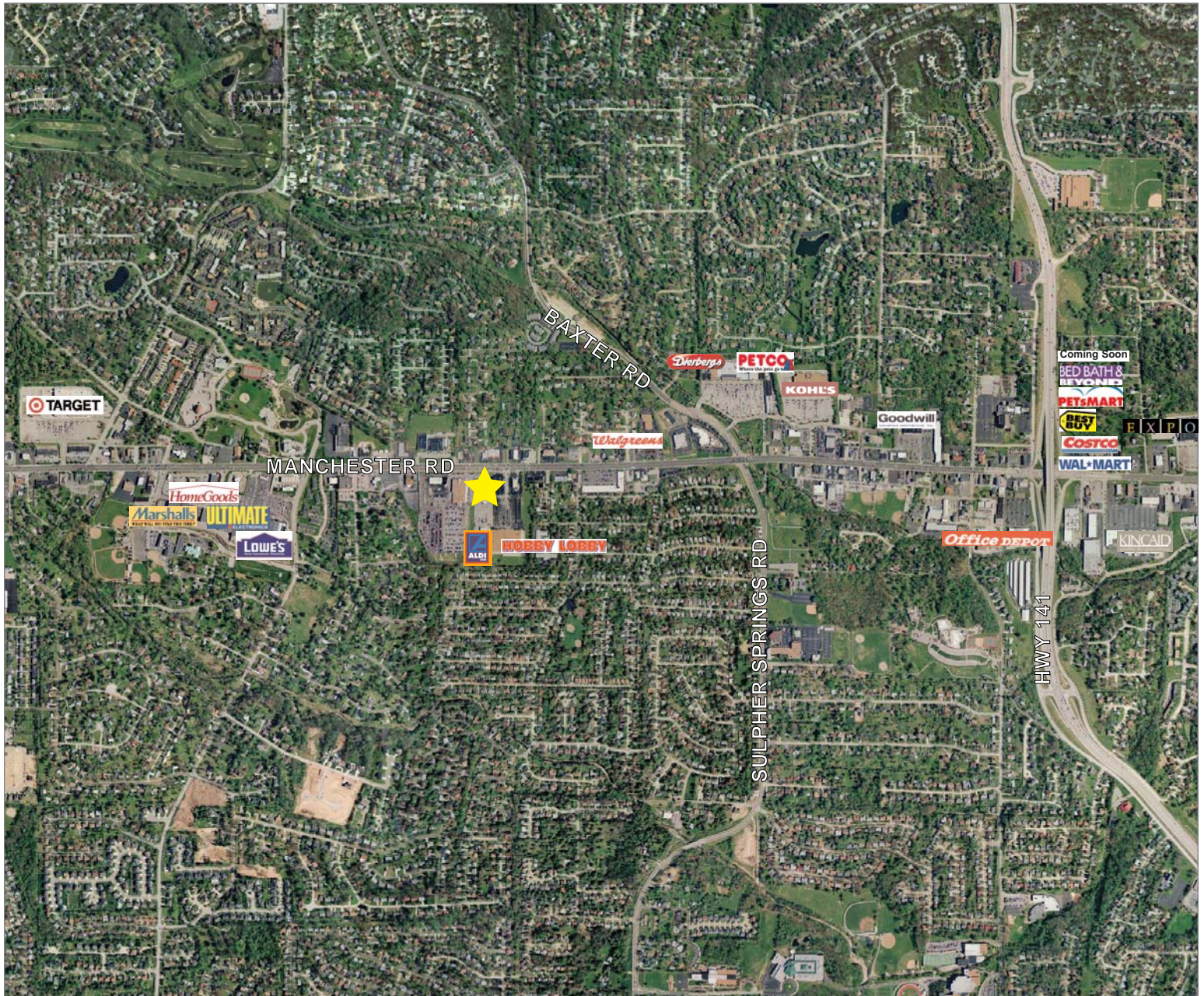
Michelle Kann, Esq.
314 994 2320
mkann@naidesco.com

The information contained herein has been given to us by the owner of the property or other sources we deem reliable. We have no reason to doubt its accuracy, but we do not guarantee it. All information should be verified prior to lease or purchase.

8235 Forsyth Blvd Ste 210 St Louis MO 63105
Phone 314 994 4444 Fax 314 994 4088
www.naidesco.com

AREA RETAILERS

14660 Manchester Rd, Ballwin MO 63011



Contact

NAIDESCO

Commercial Real Estate Services, Worldwide.

Peter Sheahan
314 994 4081
psheahan@naidesco.com

Michelle Kann, Esq.
314 994 2320
mkann@naidesco.com

The information contained herein has been given to us by the owner of the property or other sources we deem reliable. We have no reason to doubt its accuracy, but we do not guarantee it. All information should be verified prior to lease or purchase.

8235 Forsyth Blvd Ste 210 St Louis MO 63105
Phone 314 994 4444 Fax 314 994 4088
www.naidesco.com