

# FOR SALE / LEASE

## 2,878 SF Office Condo

#7 The Pines Court, Unit D1/D2, Chesterfield MO 63141



### Property Highlights

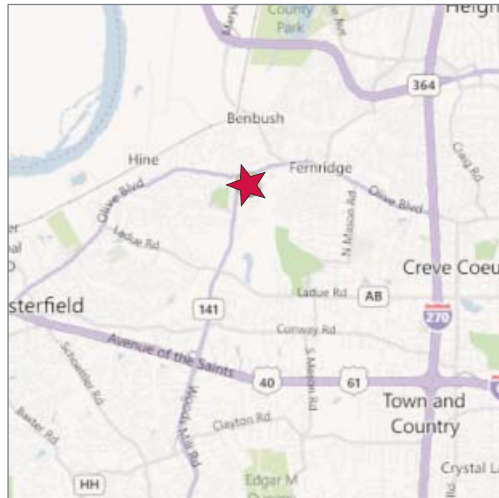
- 2,878 SF office condo
- Balcony & fireplace
- Free reserved & unreserved parking
- Cat 5 wiring throughout
- Great layout on two levels
- Storage room on lower level
- Convenient access to Highway 141, I-40/64 & Olive Street Rd

### New Lease Rate

\$9.95 psf, NNN

### Sale Price

\$385,000



# NAIDESCO

Commercial Real Estate Services, Worldwide.

### Contact

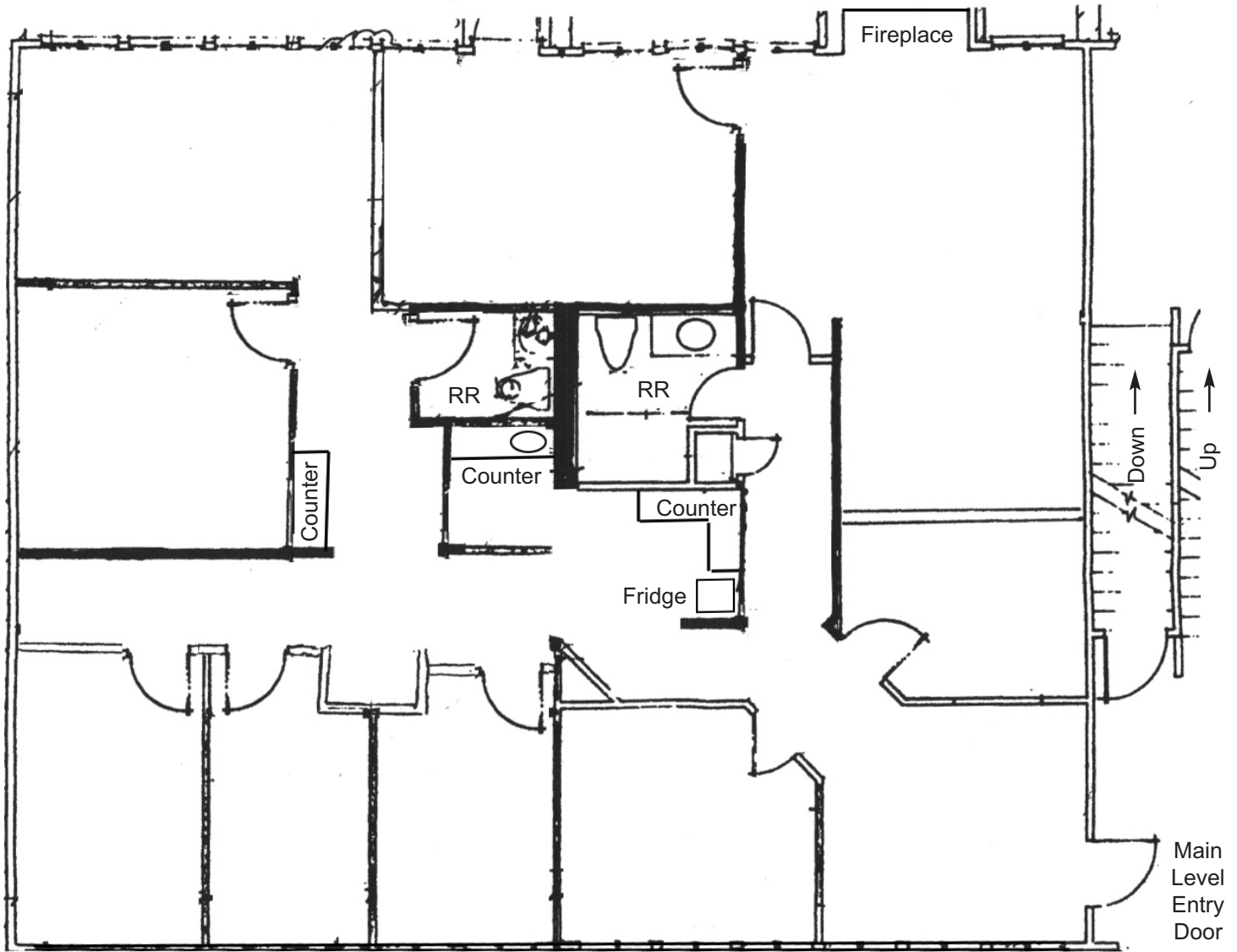
Dan Hayes  
314 994 4068 Direct  
314 401 4944 Mobile  
dhayes@naidesco.com

The information contained herein has been given to us by the owner of the property or other sources we deem reliable. We have no reason to doubt its accuracy, but we do not guarantee it. All information should be verified prior to lease or purchase.

8235 Forsyth Blvd Ste 210 St Louis MO 63105  
Phone 314 994 4444 Fax 314 994 4088  
www.naidesco.com

# Floor Plan

#7 The Pines Court, Unit D1/D2, Chesterfield MO 63141



**NAIDESCO**

Commercial Real Estate Services, Worldwide.

## Contact

Dan Hayes  
314 994 4068 Direct  
314 401 4944 Mobile  
dhayes@naidesco.com

The information contained herein has been given to us by the owner of the property or other sources we deem reliable. We have no reason to doubt its accuracy, but we do not guarantee it. All information should be verified prior to lease or purchase.

8235 Forsyth Blvd Ste 210 St Louis MO 63105  
Phone 314 994 4444 Fax 314 994 4088  
www.naidesco.com