

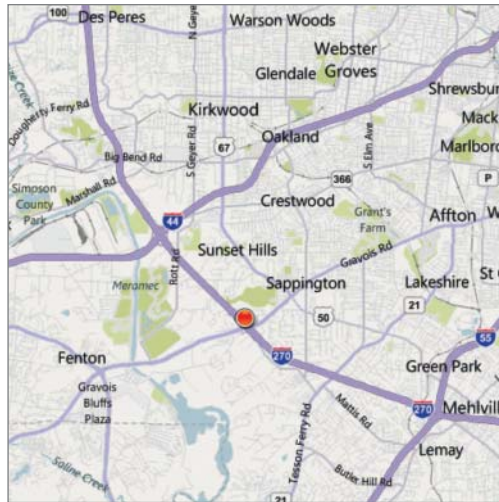
FOR LEASE

1,127 - 25,646 SF Medical Space

9701 Landmark Pkwy, St. Louis MO 63127



Rendering of Common Area Improvements



Property Highlights

- Suites available from 1,127 SF - 25,646 SF
- 7:1000 parking ratio
- Covered physician parking
- Visible to 157,034 VPD on I-270
- Well positioned between St. Anthony and St. Claire Hospitals

Lease Rate

\$19.50 prsf, Full Service



Commercial Real Estate Services, Worldwide.

Contact

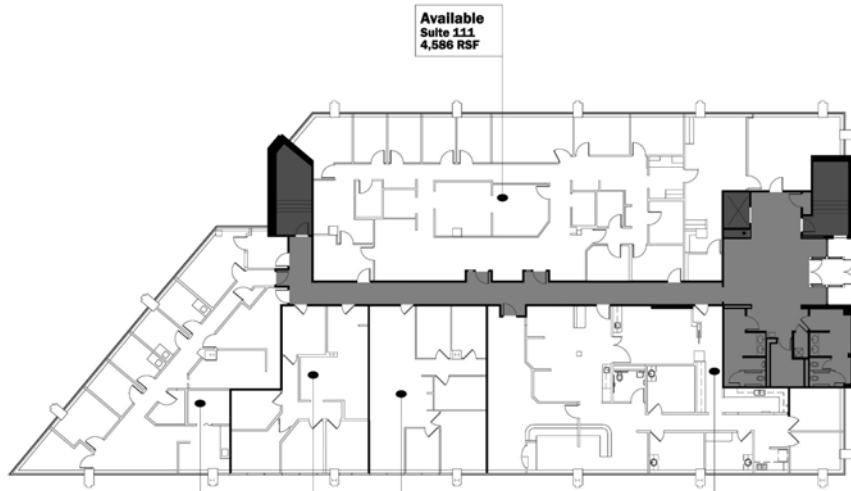
Barry Iken
314 994 2323 Direct
314 239 4547 Mobile
biken@naidesco.com

8235 Forsyth Blvd Ste 210 St Louis MO 63105
Phone 314 994 4444 Fax 314 994 4088
www.naidesco.com

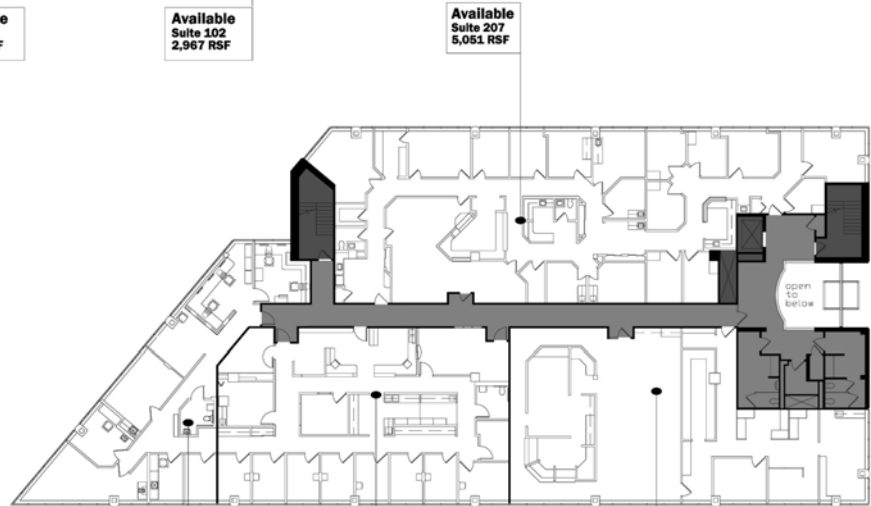
The information contained herein has been given to us by the owner of the property or other sources we deem reliable. We have no reason to doubt its accuracy, but we do not guarantee it. All information should be verified prior to lease or purchase.

FLOOR PLANS

9701 Landmark Pkwy, St. Louis MO 63127



FIRST FLOOR PLAN



SECOND FLOOR PLAN



Commercial Real Estate Services, Worldwide.

Contact

Barry Iken
314 994 2323 Direct
314 239 4547 Mobile
biken@naidesco.com

The information contained herein has been given to us by the owner of the property or other sources we deem reliable. We have no reason to doubt its accuracy, but we do not guarantee it. All information should be verified prior to lease or purchase.

8235 Forsyth Blvd Ste 210 St Louis MO 63105
Phone 314 994 4444 Fax 314 994 4088
www.naidesco.com