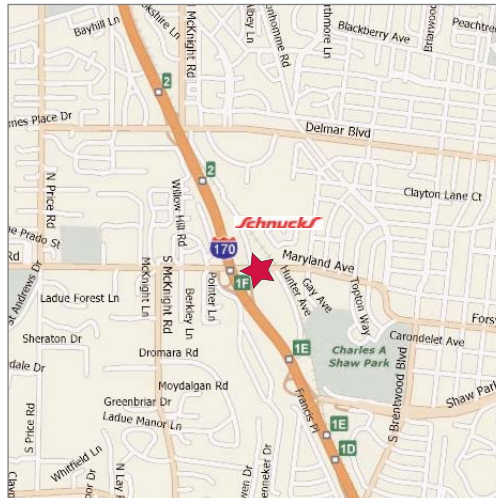
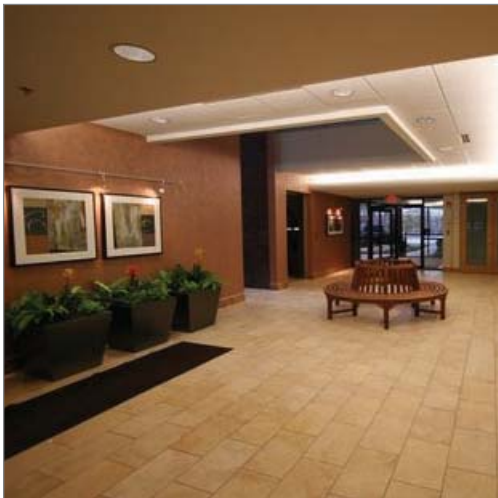


FOR LEASE - MEDICAL SPACE

2,500 SF Available

8888 Ladue Rd, St. Louis MO 63124

1st
Floor
Suite



Property Highlights

- Located at Ladue Rd & I-170 with visibility from I-170
- Signalized intersection at Ladue & Hunter Rd
- Common area renovations
- Ample parking
- Over 116,000 cars per day
- New building & monument signage

Lease Rate

\$26.35 psf, Full Service

Contact



Commercial Real Estate Services, Worldwide.

Matt Hirsch
314 994 2324 Direct
mhirsch@naidesco.com

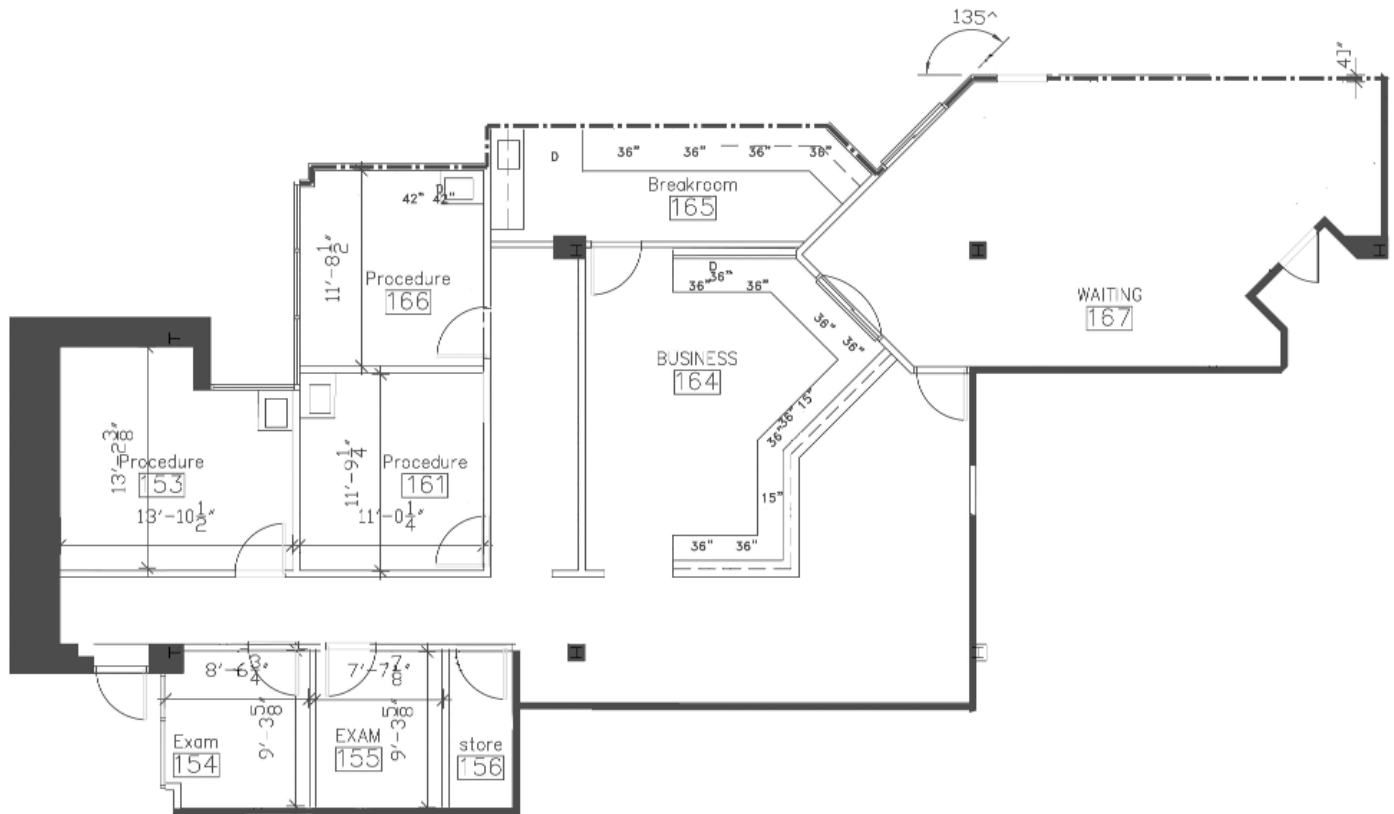
Barry Iken
314 994 2323 Direct
314 239 4547 Mobile
biken@naidesco.com

The information contained herein has been given to us by the owner of the property or other sources we deem reliable. We have no reason to doubt its accuracy, but we do not guarantee it. All information should be verified prior to lease or purchase.

8235 Forsyth Blvd Ste 210 St Louis MO 63105
Phone 314 994 4444 Fax 314 994 4088
www.naidesco.com

FLOOR PLAN

8888 Ladue Rd, St. Louis MO 63124



Contact



Commercial Real Estate Services, Worldwide.

Matt Hirsch
314 994 2324 Direct
mhirsch@naidesco.com

Barry Iken
314 994 2323 Direct
314 239 4547 Mobile
biken@naidesco.com

The information contained herein has been given to us by the owner of the property or other sources we deem reliable. We have no reason to doubt its accuracy, but we do not guarantee it. All information should be verified prior to lease or purchase.

8235 Forsyth Blvd Ste 210 St Louis MO 63105
Phone 314 994 4444 Fax 314 994 4088
www.naidesco.com