

# FOR LEASE

## 1,000 - 54,426 SF Medical Office Suites

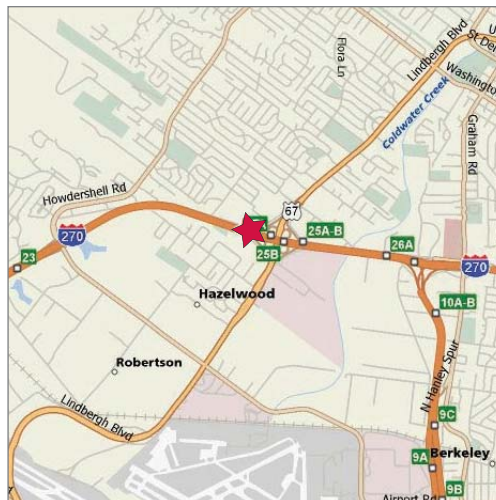
637 Dunn Rd, Hazelwood MO 63042



### Available Suites

- Suite #100 – 7,217 SF
- Suite #101 – 600 SF
- Suite #102 – 5,847 SF
- Suite #103 – 18,500 SF
- Suite #135 – 2,196 SF
- Suite #150 – 1,412 SF
- Suite #185 – 6,214 SF

\* Some suites contiguous



### Property Highlights

- Multiple suites available with varying levels of medical build-out
- Professional medical office building
- Visible to I-270 with traffic counts of approx. 183,720 AADT
- Covered patient drop off
- Ample parking
- Located near DePaul & Christian Northeast hospitals

### Lease Rate

\$20.00 psf, Full Service

### Contact



Commercial Real Estate Services, Worldwide.

Barry Iken  
314 994 2323 Direct  
314 239 4547 Mobile  
biken@naidesco.com

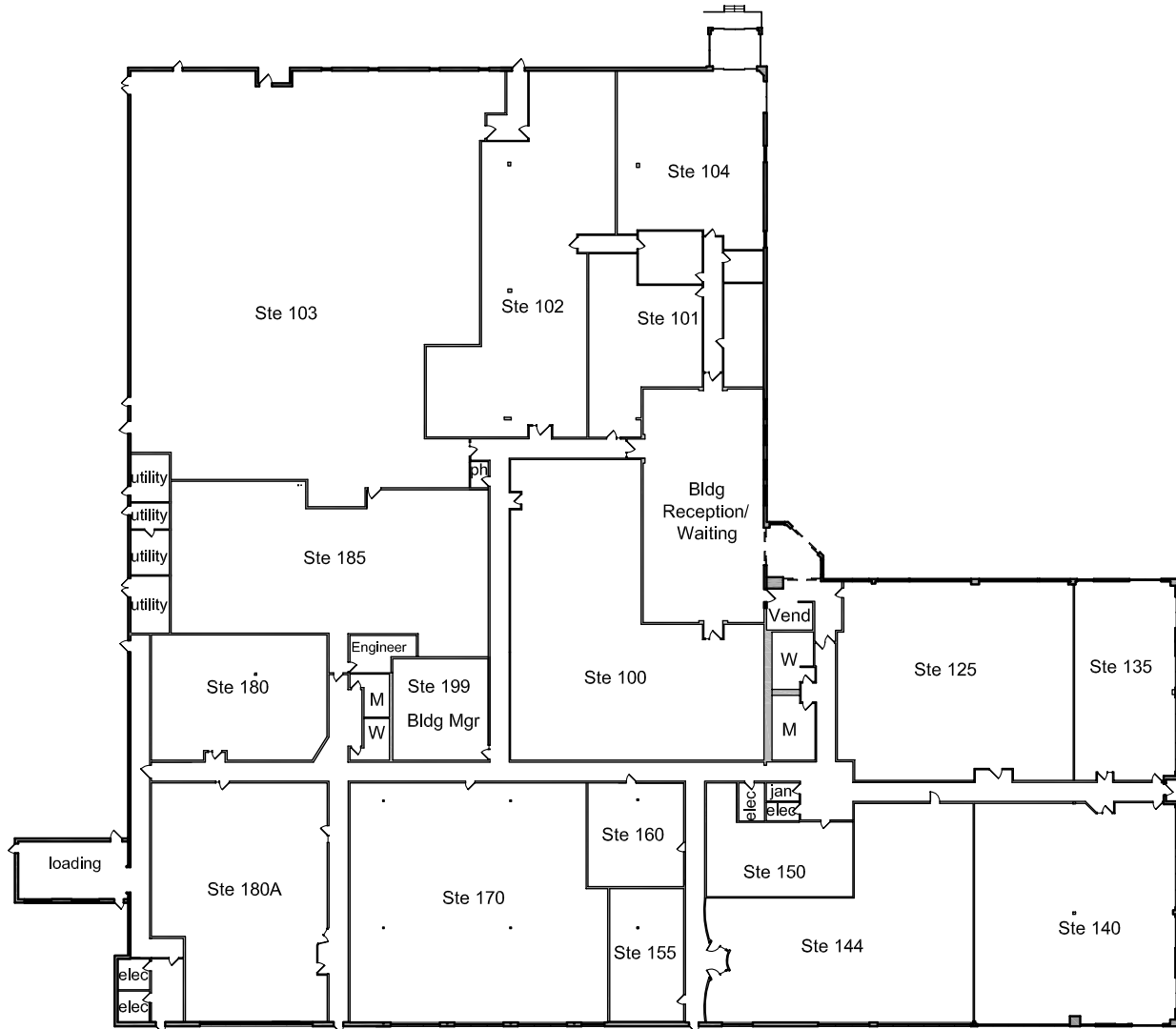
Matt Hirsch  
314 994 2324 Direct  
mhirsch@naidesco.com

The information contained herein has been given to us by the owner of the property or other sources we deem reliable. We have no reason to doubt its accuracy, but we do not guarantee it. All information should be verified prior to lease or purchase.

8235 Forsyth Blvd Ste 210 St Louis MO 63105  
Phone 314 994 4444 Fax 314 994 4088  
www.naidesco.com

# FLOOR PLAN

637 Dunn Rd, Hazelwood MO 63042



1st FLOOR PLAN  
SCALE: NONE

## Contact

**NAIDESCO**  
Commercial Real Estate Services, Worldwide.

Barry Iken  
314 994 2323 Direct  
314 239 4547 Mobile  
biken@naidesco.com

Matt Hirsch  
314 994 2324 Direct  
mhirsch@naidesco.com