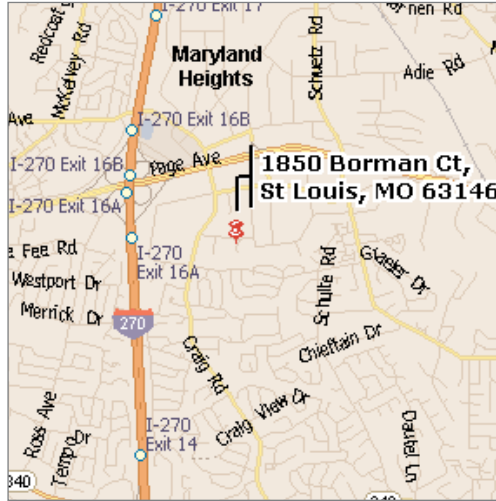


FOR LEASE

8,811 SF Office Space

1850 Borman Ct, St. Louis MO 63146



Property Highlights

- Excellent Westport location
- Large training room / conference room
- 3:1,000 Parking
- Multiple fiber entries
- Built in 1986
- Located on +/- 3 acres
- Building also for sale: 41,391 SF total

Lease Rate / Sale Price

\$ 10.50 psf, MG / \$3,700,000

Contact

NAIDESCO

Commercial Real Estate Services, Worldwide.

Andy Murphy
314 994 4093
amurphy@naidesco.com

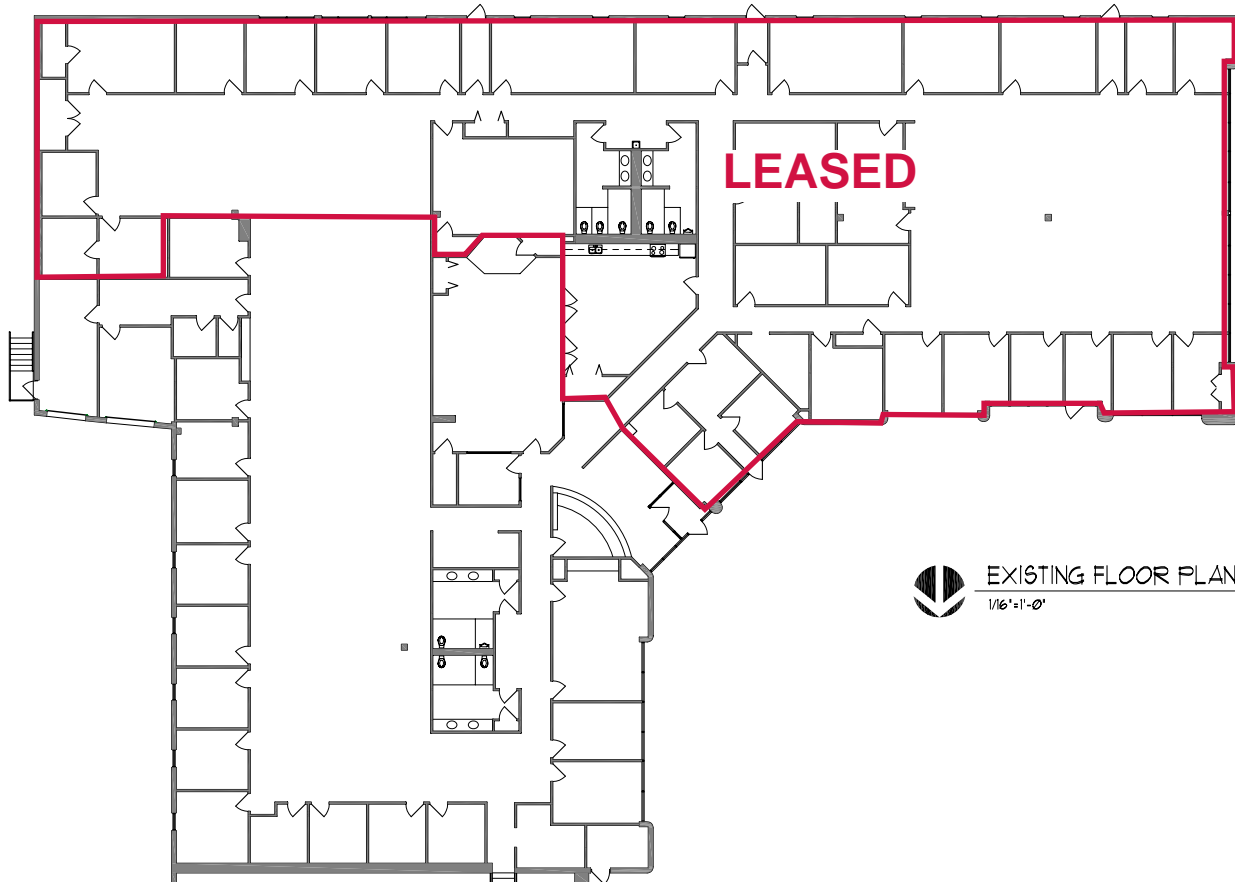
Floyd Sweeney, SIOR, MCR
314 994 4445
fsweeney@naidesco.com

The information contained herein has been given to us by the owner of the property or other sources we deem reliable. We have no reason to doubt its accuracy, but we do not guarantee it. All information should be verified prior to lease or purchase.

8235 Forsyth Blvd Ste 210 St Louis MO 63105
Phone 314 994 4444 Fax 314 994 4088
www.naidesco.com

FLOOR PLAN

1850 Borman Ct, St. Louis MO 63146



EXISTING FLOOR PLAN - LEVEL D

1/8"=1'-0"

12-06-06

Contact



Commercial Real Estate Services, Worldwide.

Andy Murphy
314 994 4093
amurphy@naidesco.com

Floyd Sweeney, SIOR, MCR
314 994 4445
fsweeney@naidesco.com

The information contained herein has been given to us by the owner of the property or other sources we deem reliable. We have no reason to doubt its accuracy, but we do not guarantee it. All information should be verified prior to lease or purchase.

8235 Forsyth Blvd Ste 210 St Louis MO 63105
Phone 314 994 4444 Fax 314 994 4088
www.naidesco.com