

# FOR LEASE

## 7,523 SF Office / Service Center

18067 Edison Ave, Chesterfield (Valley) MO 63005



### Property Highlights

- 7,523 SF office / service center available
- 58% office finish
- 2 docks
- 3 offices
- Open office space
- 2 restrooms
- Conference room
- Lunch room
- Sprinklered
- Floor plan on reverse

### Lease Rate

\$8.50 psf, NNN

### Contact

Dan Hayes  
314 994 4068 office  
dhayes@naidesco.com

### Contact

Mark Mannion  
314 726 1440 office  
markmannion@sbcglobal.net

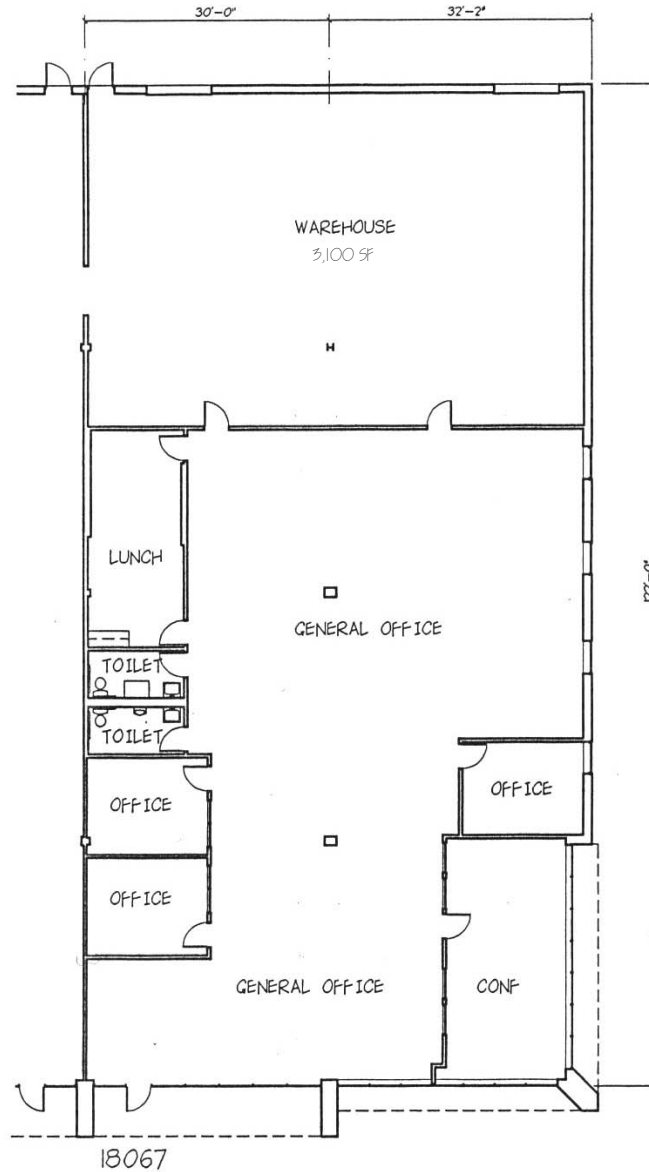


The information contained herein has been given to us by the owner of the property or other sources we deem reliable. We have no reason to doubt its accuracy, but we do not guarantee it. All information should be verified prior to lease or purchase.

8235 Forsyth Blvd Ste 210 St Louis MO 63105  
Phone 314 994 4444 Fax 314 994 4088  
www.naidesco.com

# FLOOR PLAN

18067 Edison Ave, Chesterfield (Valley) MO 63005



## Contact

Dan Hayes  
314 994 4068 office  
dhayes@naidesco.com

## Contact

Mark Mannion  
314 726 1440 office  
markmannion@sbcglobal.net

**NAIDESCO**

**Mannion Properties**

The information contained herein has been given to us by the owner of the property or other sources we deem reliable. We have no reason to doubt its accuracy, but we do not guarantee it. All information should be verified prior to lease or purchase.

8235 Forsyth Blvd Ste 210 St Louis MO 63105  
Phone 314 994 4444 Fax 314 994 4088  
www.naidesco.com