

FOR LEASE

1,838 - 2,868 RSF Office Space

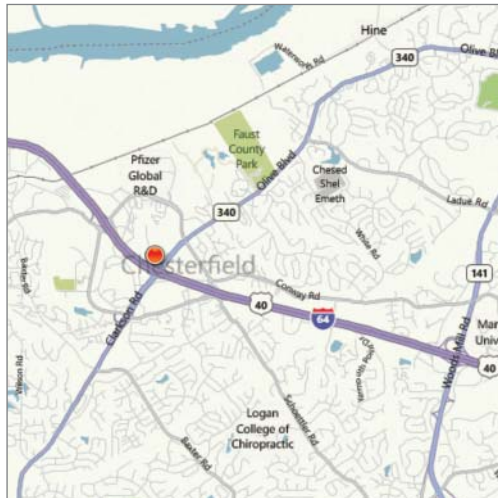
Emerald Point - 16141 Swingley Ridge Rd, Chesterfield 63017



Available Suites

- Suite 109 - 2,868 RSF
- Suite 201 - 1,838 RSF
- Suite 303 - 2,686 RSF

Features include reserved covered parking, overnight drop box, lobby exposure and excellent glass-line



Property Highlights

- Emerald Point is located in the heart of Chesterfield, next to the post office with easy access to hotels, shopping & restaurants
- Access from signalized intersection at Swingley Ridge and Clarkson Rd, 1/4 mile east of I-64/40

Lease Rate

\$19.50 psf, Full Service



Commercial Real Estate Services, Worldwide.

Contact

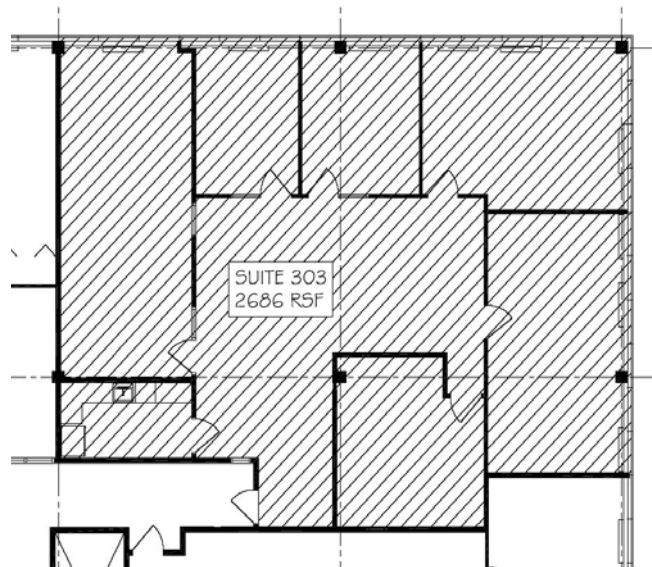
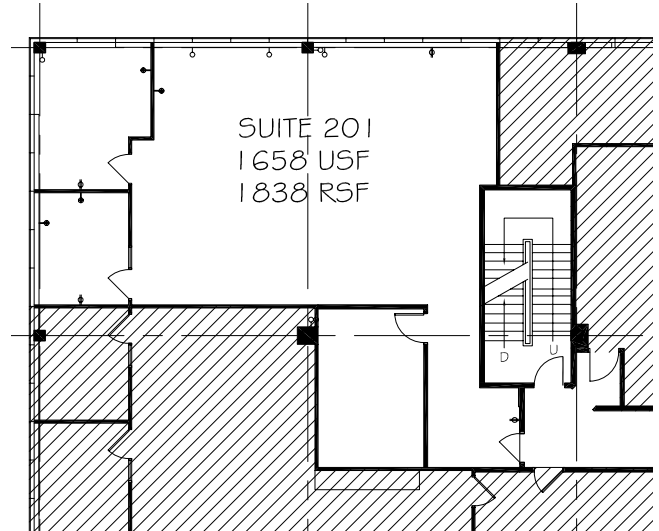
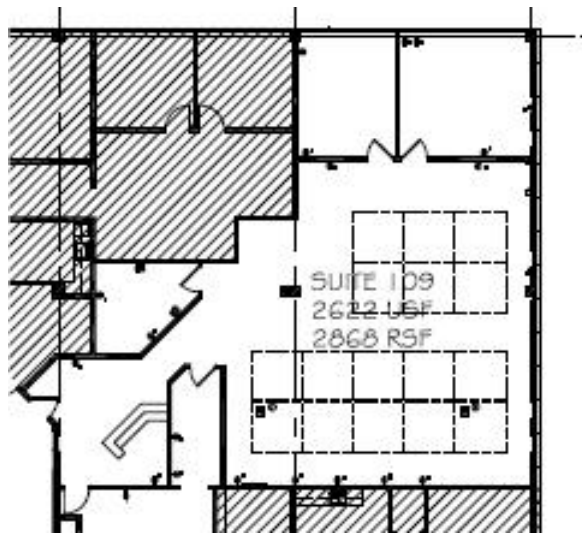
Michael Wolken, SIOR
314 994 4948
mwolken@naidesco.com

The information contained herein has been given to us by the owner of the property or other sources we deem reliable. We have no reason to doubt its accuracy, but we do not guarantee it. All information should be verified prior to lease or purchase.

8235 Forsyth Blvd Ste 210 | St Louis MO 63105
Phone 314 994 4444 | Fax 314 994 4088
www.naidesco.com | info@naidesco.com

FLOOR PLANS

Emerald Point - 16141 Swingley Ridge Rd, Chesterfield 63017



Commercial Real Estate Services, Worldwide.

Contact

Michael Wolken, SIOR
314 994 4948
mwolken@naidesco.com

The information contained herein has been given to us by the owner of the property or other sources we deem reliable. We have no reason to doubt its accuracy, but we do not guarantee it. All information should be verified prior to lease or purchase.

8235 Forsyth Blvd Ste 210 | St Louis MO 63105
Phone 314 994 4444 | Fax 314 994 4088
www.naidesco.com | info@naidesco.com