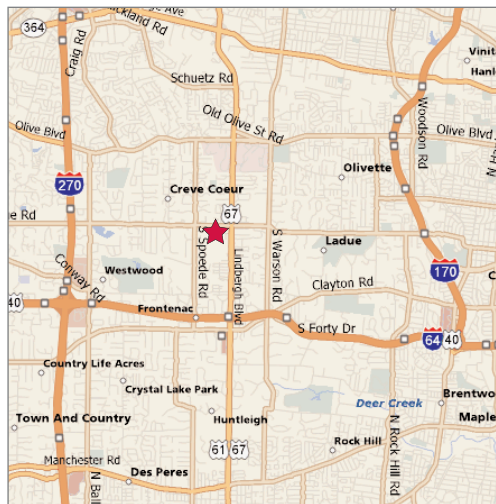


FOR LEASE 5,000 SF Office

10324 Ladue Rd, Creve Coeur MO 63141



Side View



Property Highlights

- 5,000 SF available, fronting on Ladue Rd
- Attractive one story brick building
- Functional layout
- Restaurants & retailers nearby
- Ample parking
- Building signage available
- Perfect for a small business (insurance, CPA, law firm)
- High profile location at Ladue Rd & Lindbergh Blvd

New Lease Rate

\$17.75 \$16.00 psf, Full Service
(excludes gas & electric)

NAIDESCO

Commercial Real Estate Services, Worldwide.

Contact

John J. Sheahan, Jr., SIOR
314 994 4176
jsheahan@naidesco.com

8235 Forsyth Blvd Ste 210 St Louis MO 63105
Phone 314 994 4444 Fax 314 994 4088
www.naidesco.com

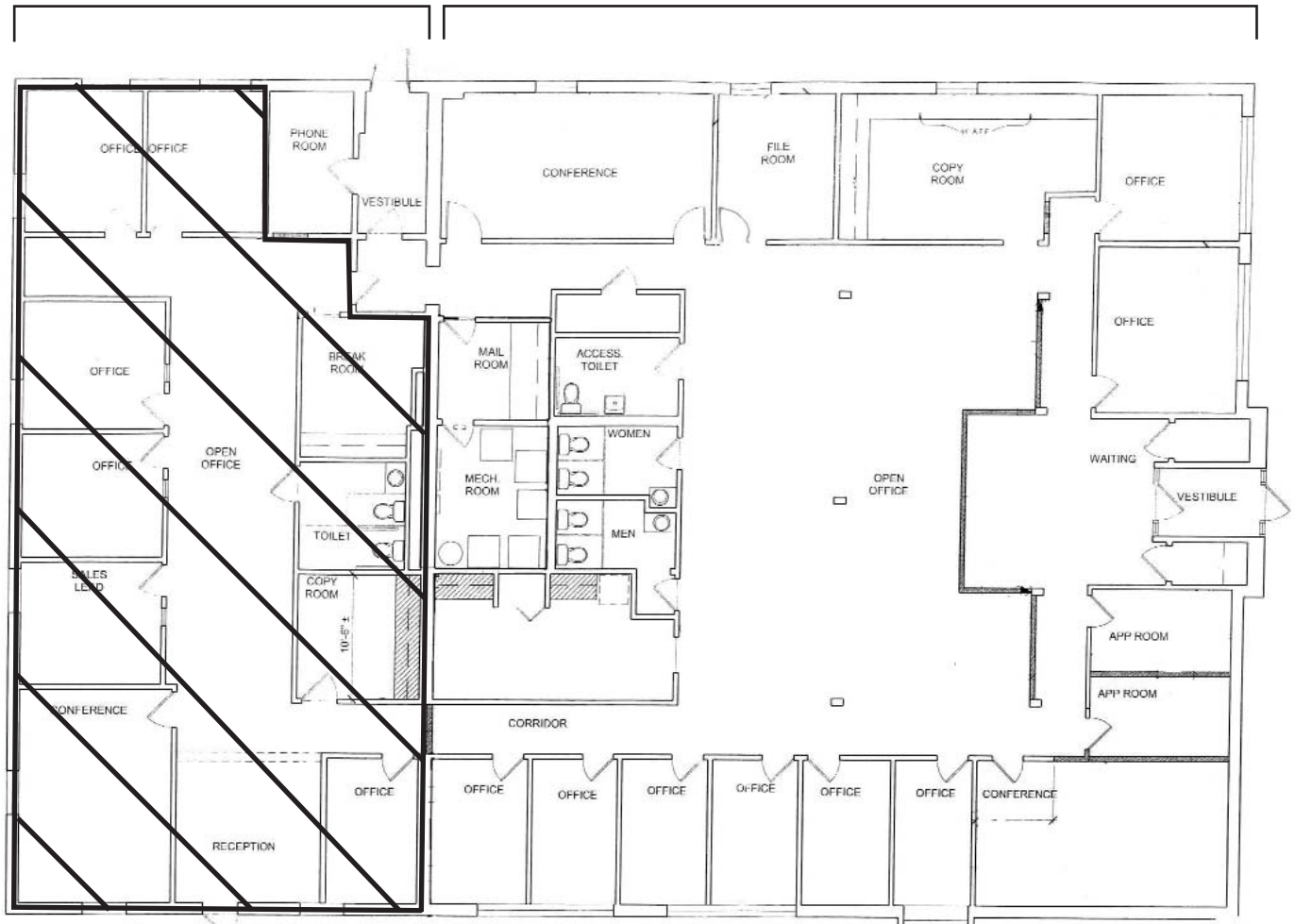
The information contained herein has been given to us by the owner of the property or other sources we deem reliable. We have no reason to doubt its accuracy, but we do not guarantee it. All information should be verified prior to lease or purchase.

FLOOR PLAN

10322 Ladue Rd, Creve Coeur MO 63141

Leased to
Cornerstone Mortgage

5,000 SF Available



1 FLOOR PLAN
SCALE: 3/32" = 1'-0" 

NAIDESCO
Commercial Real Estate Services, Worldwide.

Contact

John J. Sheahan, Jr., SIOR
314 994 4176
jsheahan@naidesco.com

The information contained herein has been given to us by the owner of the property or other sources we deem reliable. We have no reason to doubt its accuracy, but we do not guarantee it. All information should be verified prior to lease or purchase.

8235 Forsyth Blvd Ste 210 St Louis MO 63105
Phone 314 994 4444 Fax 314 994 4088
www.naidesco.com

INTERIOR PICTURES

10324 Ladue Rd, Creve Coeur MO 63141



Commercial Real Estate Services, Worldwide.

The information contained herein has been given to us by the owner of the property or other sources we deem reliable. We have no reason to doubt its accuracy, but we do not guarantee it. All information should be verified prior to lease or purchase.

Contact

John J. Sheahan, Jr., SIOR
314 994 4176
jsheahan@naidesco.com

8235 Forsyth Blvd Ste 210 St Louis MO 63105
Phone 314 994 4444 Fax 314 994 4088
www.naidesco.com