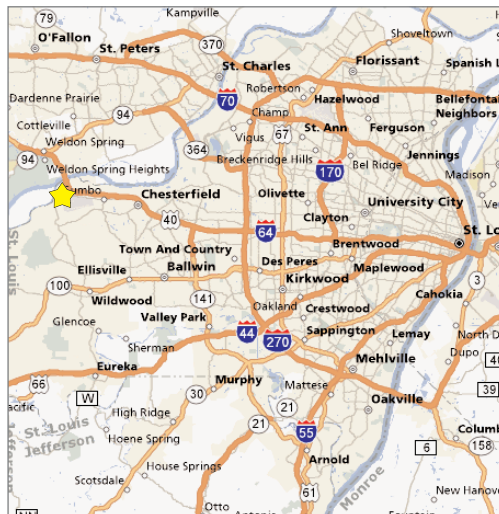


SPIRIT VALLEY BUSINESS PARK Chesterfield "Valley", Missouri

1.5 - 20 Acre Industrial / Office Lots for Sale or Lease

Screened
Outdoor
Storage

600 - 675 Spirit Valley East (Central) Drive - Chesterfield, MO 63005
Red denotes access improvements



Property Highlights

- New business park in west end of Chesterfield Valley across from Rombach pumpkin farm
- 52 acre development comprised of 1.5 to 20 acre lots
- Office/warehouse, office or light manufacturing use
- Screened outside storage permitted
- Great access to I-64/Hwy 40; Olive Street Rd changes to Route 109 as you head south

Sale Price / Lease Rate
Contact Broker



Commercial Real Estate Services, Worldwide.

Contact

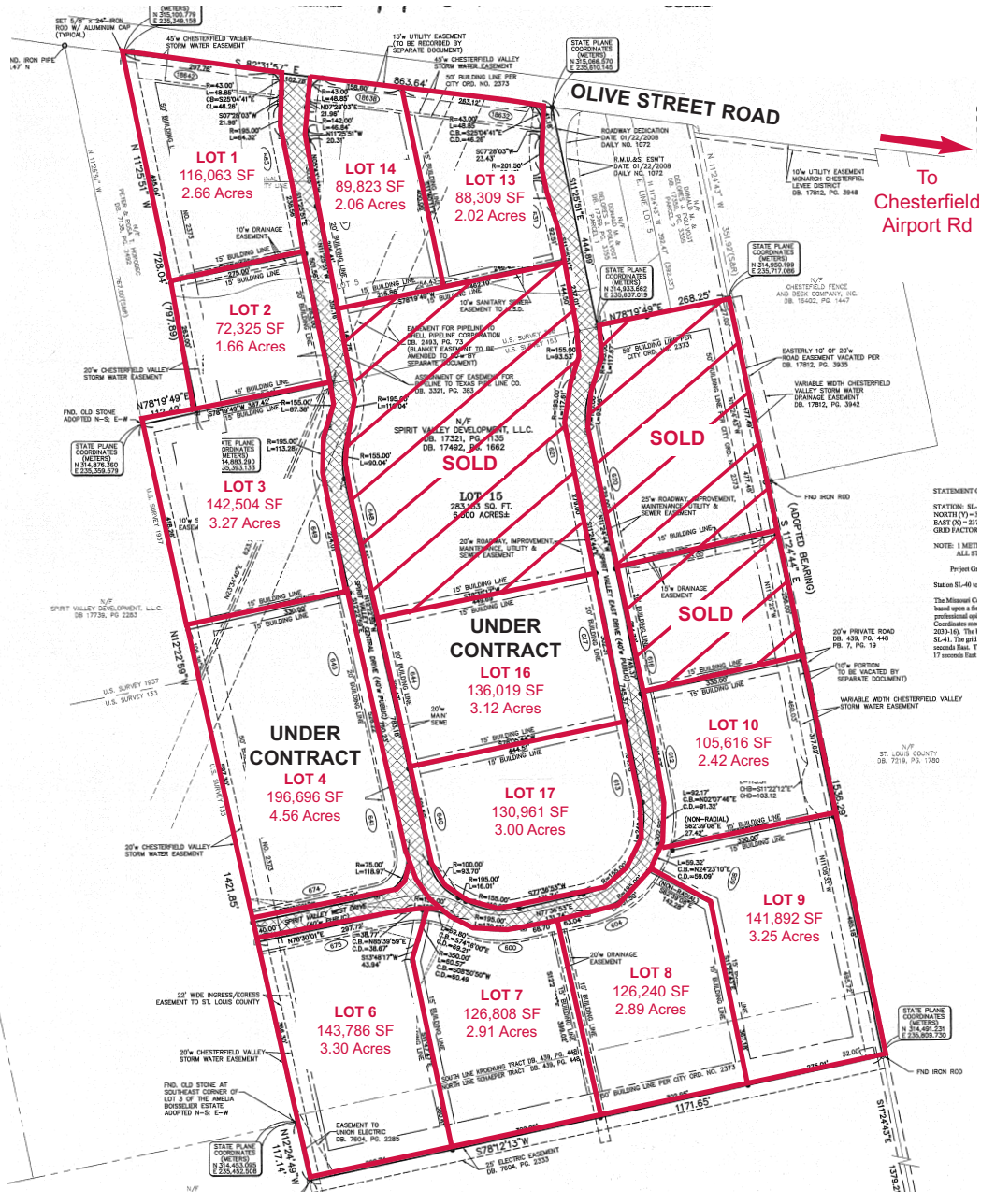
Daniel W. Hayes
314 994 4068 Direct
314 401 4944 Mobile
dhayes@naidesco.com

The information contained herein has been given to us by the owner of the property or other sources we deem reliable. We have no reason to doubt its accuracy, but we do not guarantee it. All information should be verified prior to lease or purchase.

8235 Forsyth Blvd Ste 210 St Louis MO 63105
Phone 314 994 4444 Fax 314 994 4088
www.naidesco.com

SPIRIT VALLEY BUSINESS PARK Development Plan

600-675 Spirit Valley East (Central) Dr, Chesterfield (Valley) MO 63005



Contact

Daniel W. Hayes
314 994 4068 Direct
314 401 4944 Mobile
dhayes@naidesco.com

NAIDESCO
Commercial Real Estate Services, Worldwide.

8235 Forsyth Blvd Ste 210 St Louis MO 63105
Phone 314 994 4444 Fax 314 994 4088
www.naidesco.com

The information contained herein has been given to us by the owner of the property or other sources we deem reliable. We have no reason to doubt its accuracy, but we do not guarantee it. All information should be verified prior to lease or purchase.