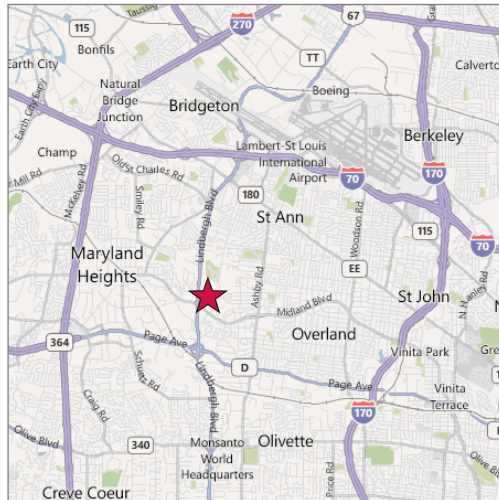
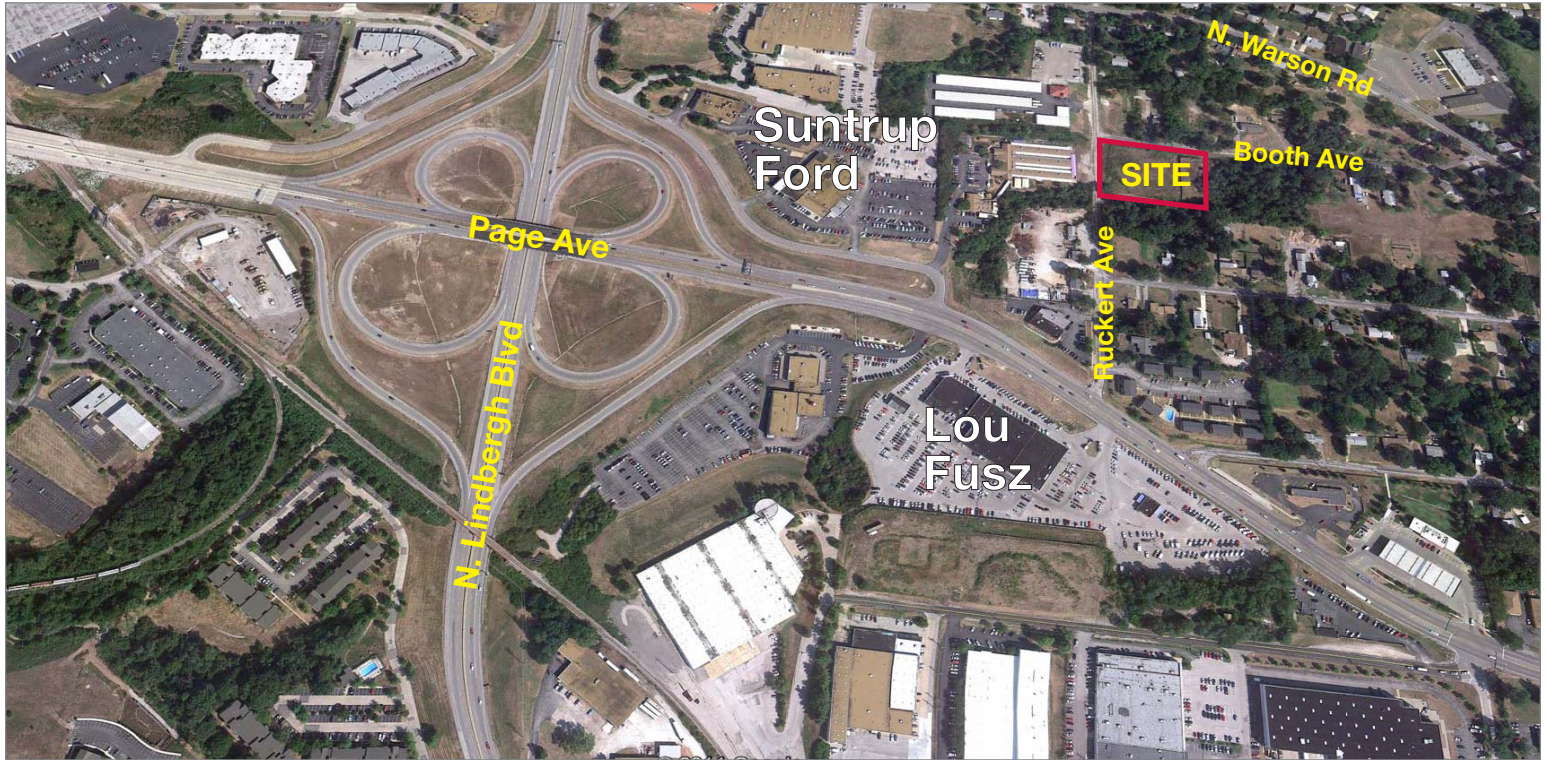


FOR SALE

2.3 Acre Development Lot

2132 Ruckert Ave, St. Louis MO 63114



Property Highlights

- 2.3 Ac corner lot zoned C-8 Planned Commercial
- All utilities to site
- Ideal site for office/warehouse with limited outside storage
- Located in unincorporated St. Louis County
- Easy access to all major hways

Sale Price

\$184,900 (\$1.85 psf)

Contact



Commercial Real Estate Services, Worldwide.

Carl Conceller, SIOR
314 994 4801
cconceller@naidesco.com

William R. Barnes, III
314 994 4401
wbarnes@naidesco.com

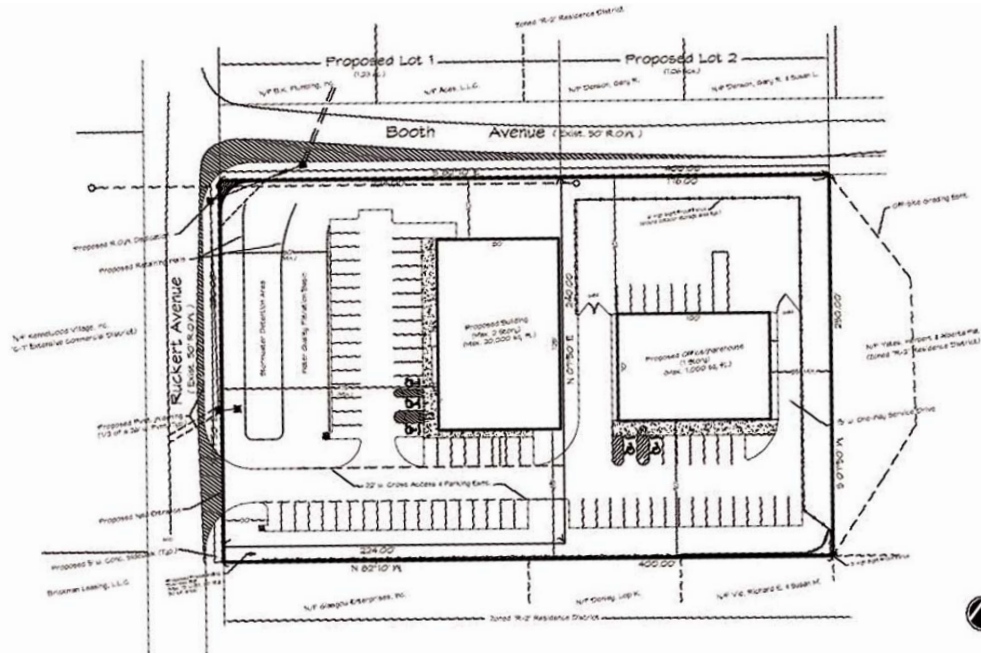
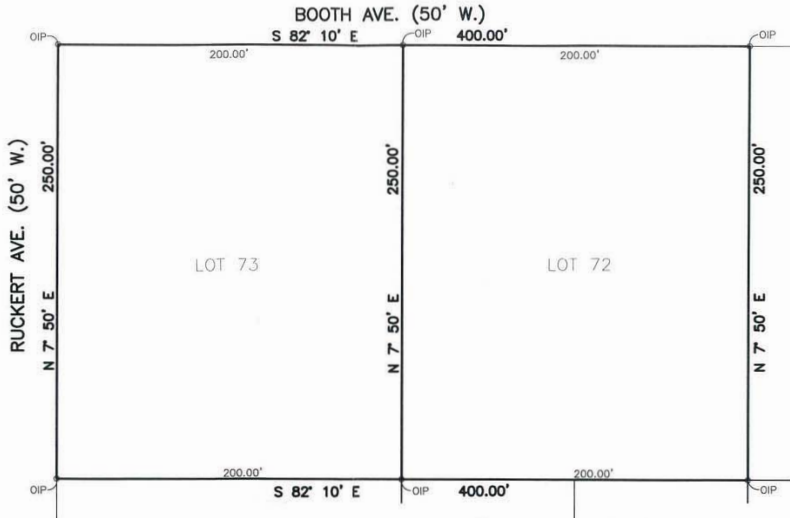
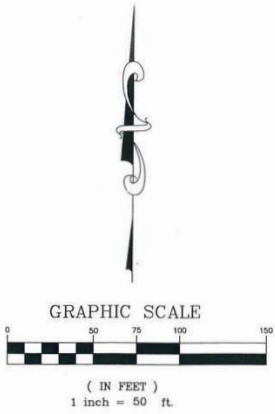
The information contained herein has been given to us by the owner of the property or other sources we deem reliable. We have no reason to doubt its accuracy, but we do not guarantee it. All information should be verified prior to lease or purchase.

8235 Forsyth Blvd Ste 210 | St Louis MO 63105
Phone 314 994 4444 | Fax 314 994 4088
www.naidesco.com | info@naidesco.com

POTENTIAL SITE PLAN

2132 Ruckert Ave, St. Louis MO 63114

A TRACT OF LAND BEING LOTS 72 & 73 OF LACKLAND PARK
TOWNSHIP 46 NORTH, RANGE 5 EAST, ST. LOUIS COUNTY, MISSOURI



Contact



Commercial Real Estate Services, Worldwide.

Carl Conceller, SIOR
314 994 4801
cconceller@naidesco.com

William R. Barnes, III
314 994 4401
wbarnes@naidesco.com