

FOR SALE

8.89 Acres of Residential Land

11184 Oak Parkway Ln, St. Louis MO 63138

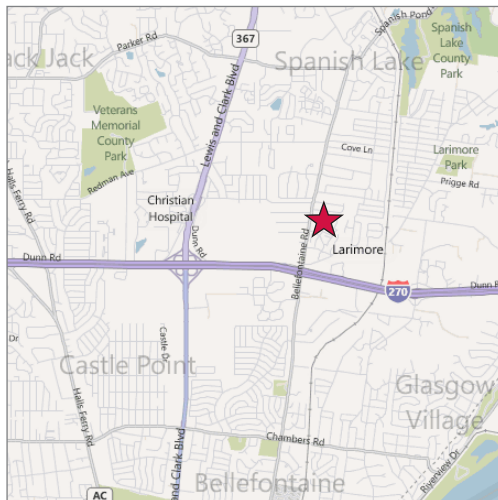


U.S. Census Demographics

	1 Mile	3 Miles	5 Miles
Population	8,967	69,588	148,299
Households	3,446	26,647	57,548
Avg HH Inc.	\$63,655	60,927	59,030

Traffic Counts

- 15,429 VPD on Bellefontaine Rd



Property Highlights

- 8.89 Acres zoned R-6
- Multi-family development site located in North St. Louis County at the intersection of Oak Pkwy Lane & Bellefontaine Rd
- Just 0.25 miles north of I-270

New Reduced Price

\$395,000

Contact



Commercial Real Estate Services, Worldwide.

Carl Conceller, SIOR
314 994 4801
cconceller@naidesco.com

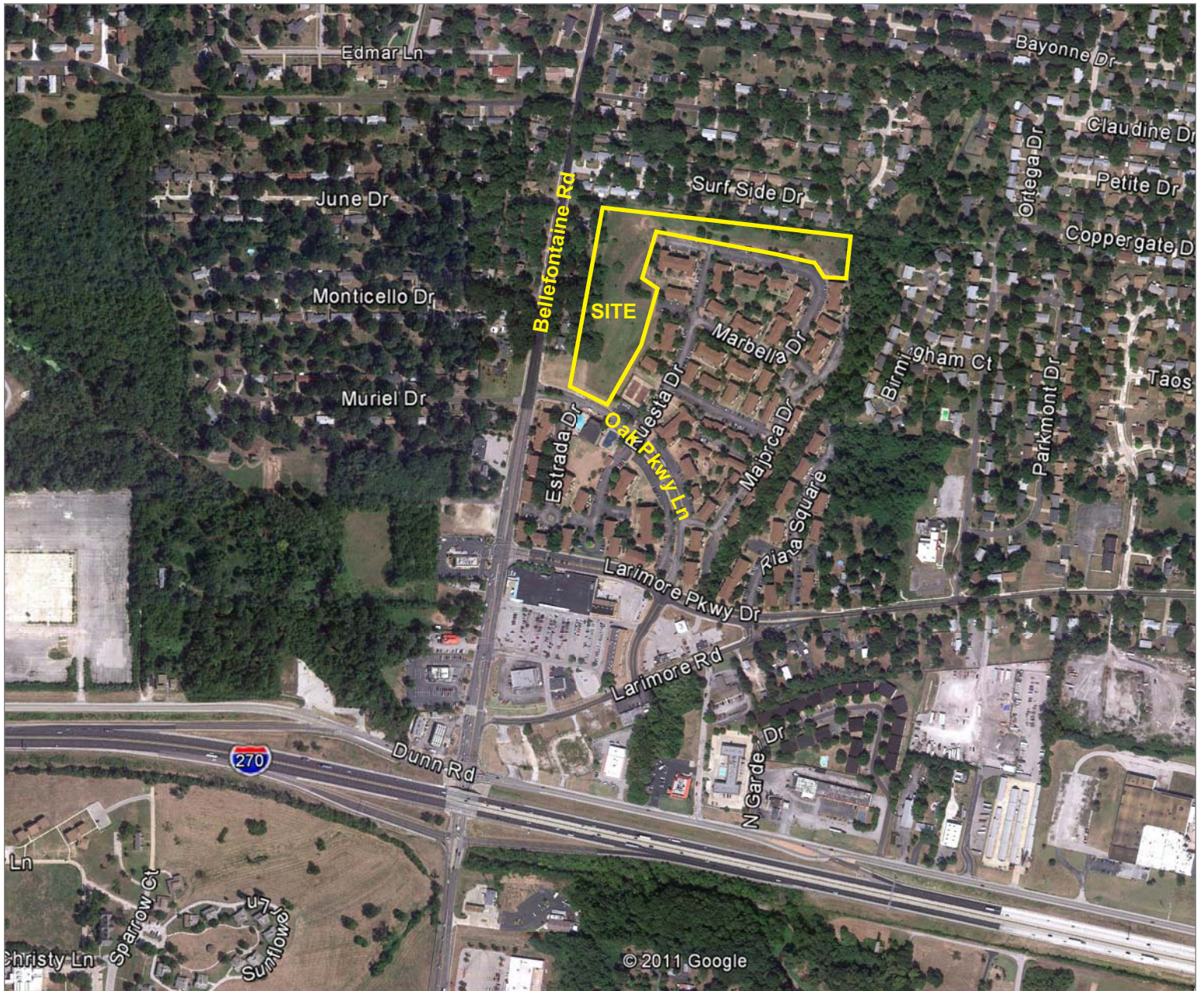
Noel Fehr, CCIM
314 994 4953
nfehr@naidesco.com

The information contained herein has been given to us by the owner of the property or other sources we deem reliable. We have no reason to doubt its accuracy, but we do not guarantee it. All information should be verified prior to lease or purchase.

8235 Forsyth Blvd Ste 210 | St Louis MO 63105
Phone 314 994 4444 | Fax 314 994 4088
www.naidesco.com | info@naidesco.com

SITE AERIAL

11184 Oak Parkway Ln, St. Louis MO 63138



Contact

NAIDESCO

Commercial Real Estate Services, Worldwide.

Carl Conceller, SIOR
314 994 4801
cconceller@naidesco.com

Noel Fehr, CCIM
314 994 4953
nfehr@naidesco.com

The information contained herein has been given to us by the owner of the property or other sources we deem reliable. We have no reason to doubt its accuracy, but we do not guarantee it. All information should be verified prior to lease or purchase.

8235 Forsyth Blvd Ste 210 | St Louis MO 63105
Phone 314 994 4444 | Fax 314 994 4088
www.naidesco.com | info@naidesco.com