

FOR SALE

9.5 Acres Commercial Land

10200 Rahning Rd, Sunset Hills MO 63127

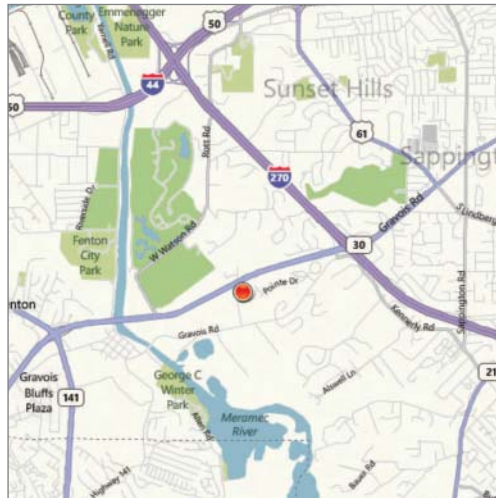


U.S. Census Demographics

	1 Mile	3 Miles	5 Miles
Population	1,874	41,164	155,963
Households	869	16,898	64,525
Avg HH Inc \$	\$106,626	87,145	81,548

Traffic Counts

- 47,117 VPD on Hwy 30



Property Highlights

- 9.5 acres total, 5 acres developable
- Zoned R-1, master planned PDLI by Sunset Hills
- Ideal for senior living, office / medical or light industrial use
- Located at signalized intersection
- Architectural / engineering site plans and renderings available

Sale Price

\$899,000 (\$2.17 psf)



Commercial Real Estate Services, Worldwide.

Contact

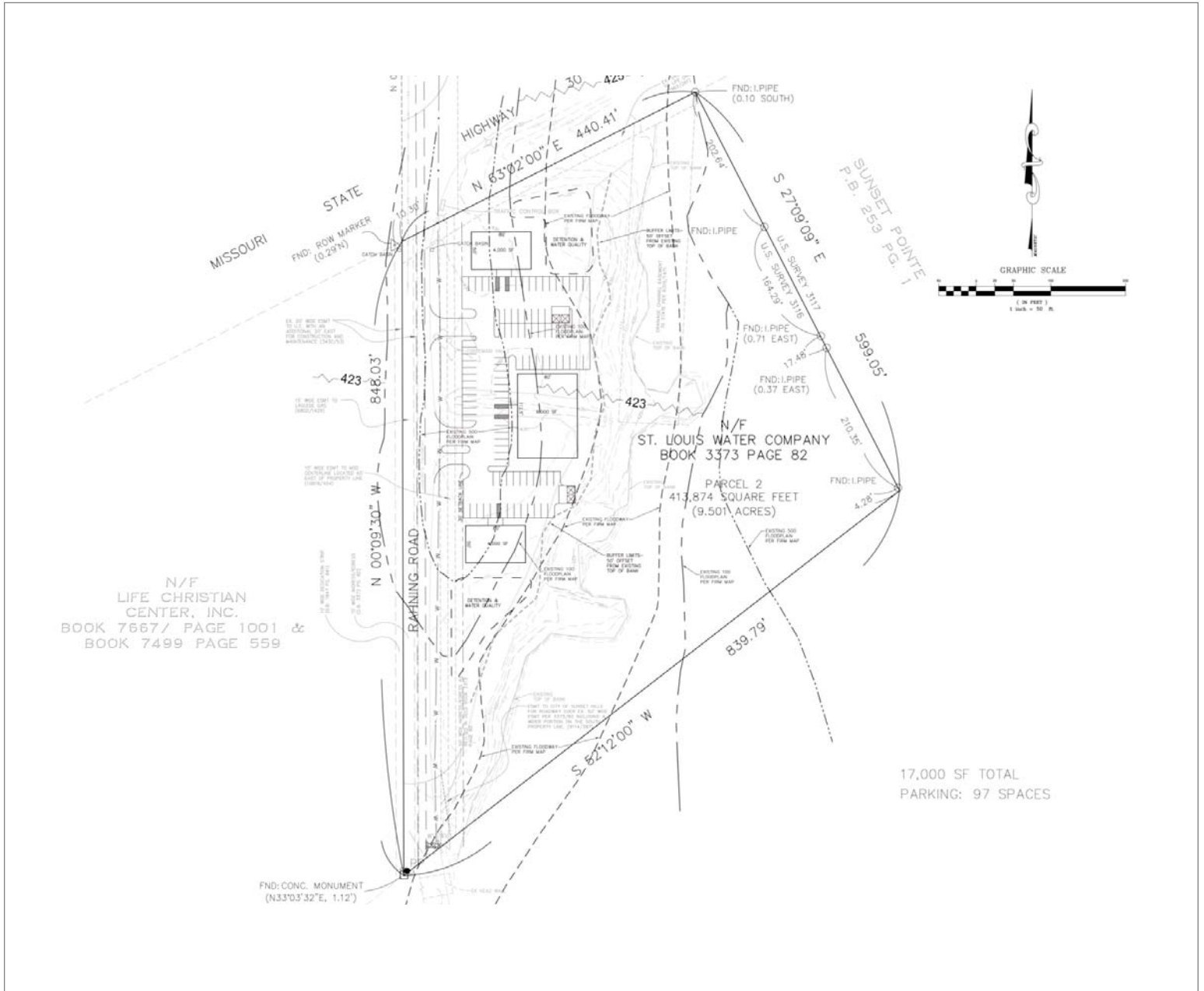
William Barnes III
 314 994 4401
 wbarnes@naidesco.com

8235 Forsyth Blvd Ste 210 | St Louis MO 63105
 Phone 314 994 4444 | Fax 314 994 4088
 www.naidesco.com | info@naidesco.com

The information contained herein has been given to us by the owner of the property or other sources we deem reliable. We have no reason to doubt its accuracy, but we do not guarantee it. All information should be verified prior to lease or purchase.

SITE PLAN

10200 Rahning Rd, Sunset Hills MO 63127



Commercial Real Estate Services, Worldwide.

Contact

William Barnes III
314 994 4401
wbarnes@naidesco.com

The information contained herein has been given to us by the owner of the property or other sources we deem reliable. We have no reason to doubt its accuracy, but we do not guarantee it. All information should be verified prior to lease or purchase.

8235 Forsyth Blvd Ste 210 | St Louis MO 63105
Phone 314 994 4444 | Fax 314 994 4088
www.naidesco.com | info@naidesco.com