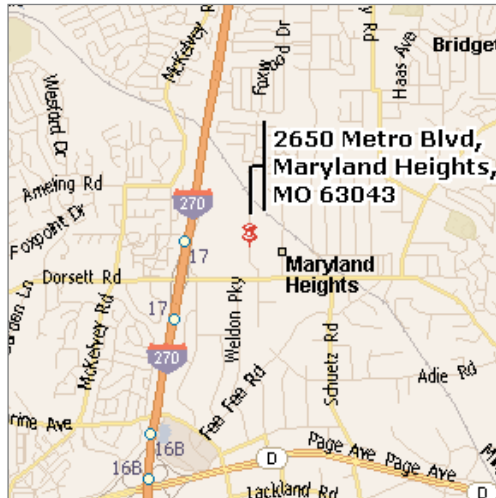


# FOR SALE

## 21,331 SF Office / Warehouse

2644-50 Metro Blvd, Maryland Heights MO 63043

ENHANCED  
COMMISSION  
TO  
PROCURING  
BROKER



### Property Highlights

- 14,000+/- SF office/showroom
- 6 docks
- 16' clear ceilings
- 60 parking spaces
- 1/4 mile from Dorsett Rd
- Easy access to I-270 & Page Ave
- 12 mins to Lambert Int'l Airport

### Sale Price

\$1,495,000

### Contact



Commercial Real Estate Services, Worldwide.

Floyd L. Sweeney, SIOR, MCR  
314 994 4445  
fsweeney@naidesco.com

Lin Sweazy  
314 994 4448  
lsweazy@naidesco.com

The information contained herein has been given to us by the owner of the property or other sources we deem reliable. We have no reason to doubt its accuracy, but we do not guarantee it. All information should be verified prior to lease or purchase.

8235 Forsyth Blvd Ste 210 St Louis MO 63105  
Phone 314 994 4444 Fax 314 994 4088  
www.naidesco.com

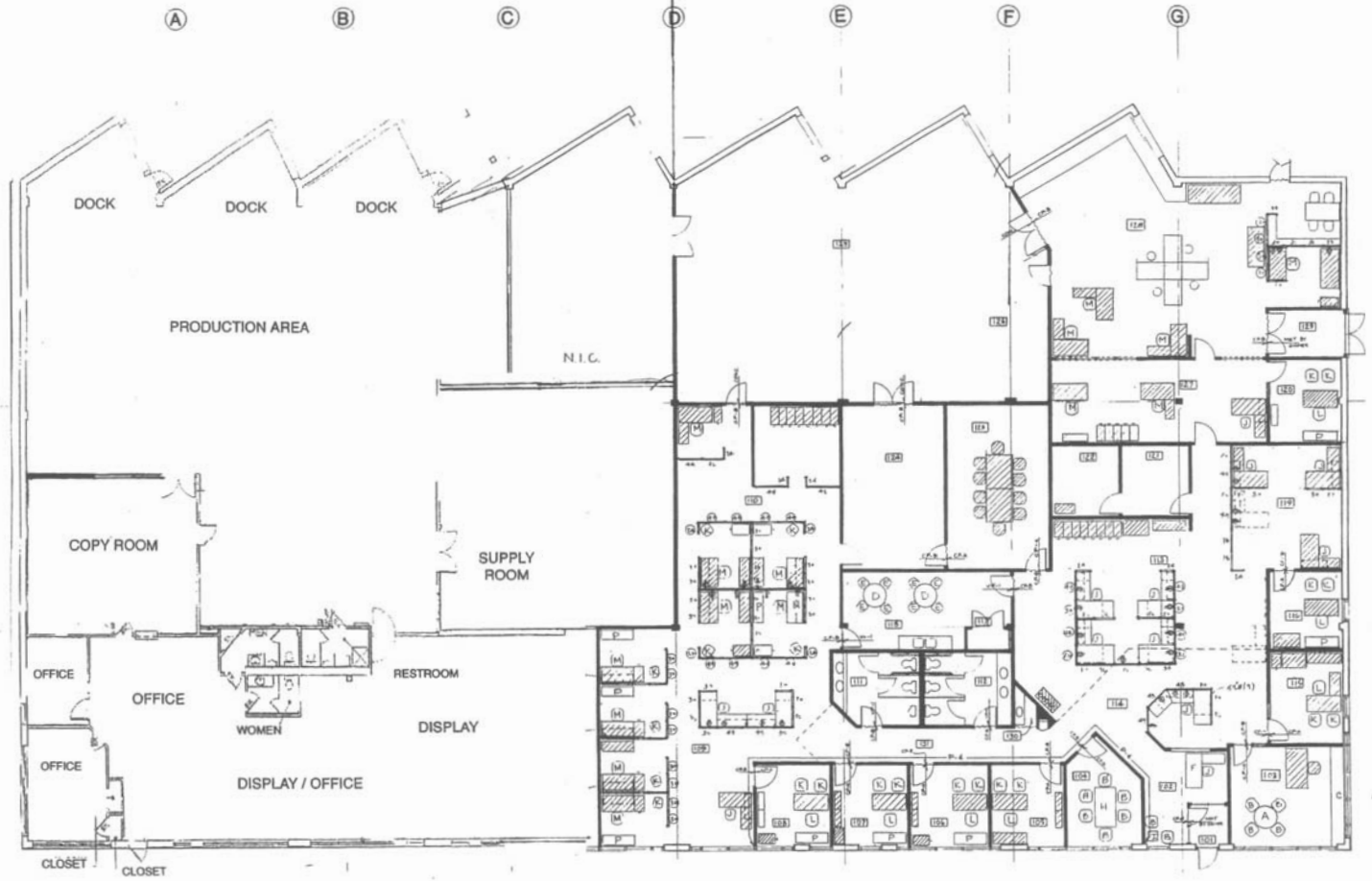
# FLOOR PLAN

2644-50 Metro Blvd, Maryland Heights MO 63043

Building is divided

8,912 SF

12,419 SF



## Contact

**NAIDESCO**

Commercial Real Estate Services, Worldwide.

Floyd L. Sweeney, SIOR, MCR  
314 994 4445  
fsweeney@naidesco.com

Lin Sweazy  
314 994 4448  
lsweazy@naidesco.com

The information contained herein has been given to us by the owner of the property or other sources we deem reliable. We have no reason to doubt its accuracy, but we do not guarantee it. All information should be verified prior to lease or purchase.

8235 Forsyth Blvd Ste 210 St Louis MO 63105  
Phone 314 994 4444 Fax 314 994 4088  
www.naidesco.com