

FOR SALE / LEASE Service Center Building

732-756 Goddard Ave, Chesterfield MO 63005

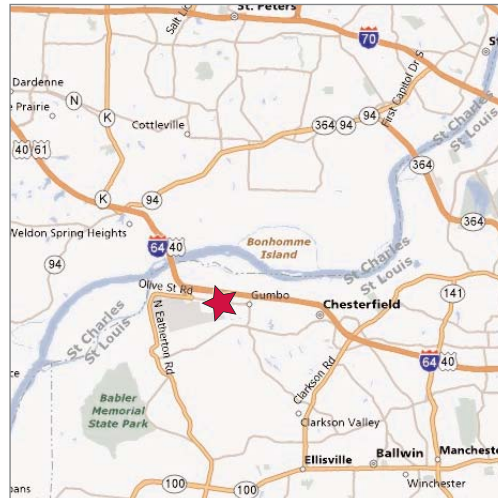


Sale Highlights

- 33,300 SF multi-tenant building
- 3.57 acres
- 75% finish, average
- 14'6" ceilings
- Large truck court
- Fully sprinklered
- Highly visible to I-64 / Hwy 40
- Located in Chesterfield Valley Center Business Park

New Sale Price

~~\$3,163,000~~ \$2,650,000



Lease Highlights

- 2,010 - 19,045 SF available
- 50% - 100% finish or build to suit
- 14'6" ceilings
- Dock / drive-in loading
- 2.5:1,000 parking
- Wet sprinklered

Lease Rate

\$12 - \$13 psf, Modified Gross

Contact

NAIDESCO

Commercial Real Estate Services, Worldwide.

John J. Sheahan, Jr., SIOR
314 994 4176 Office
314 402 1031 Mobile
jsheahan@naidesco.com

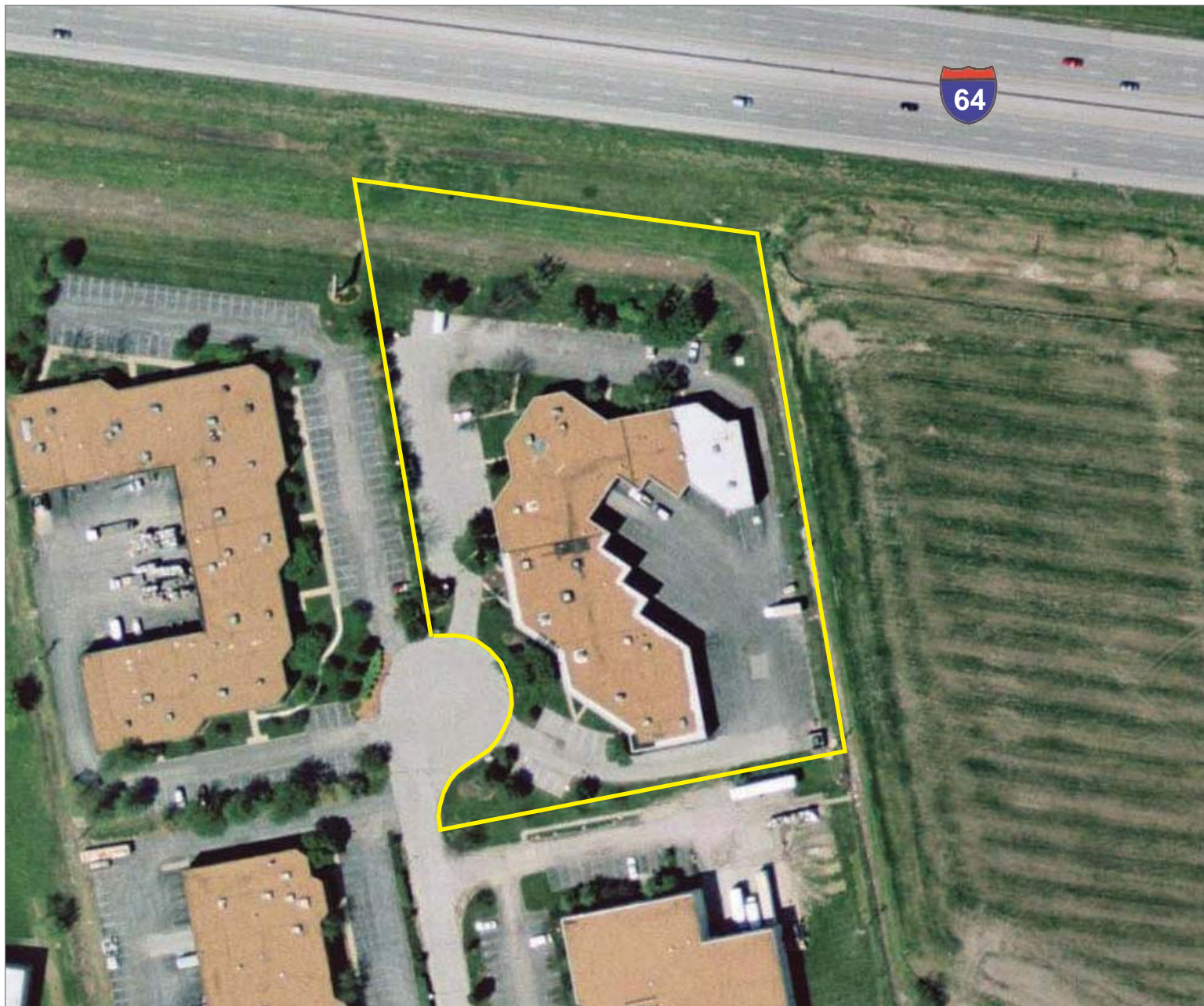
David Gannon
314 994 2321 Office
314 503 5118 Mobile
dgannon@naidesco.com

The information contained herein has been given to us by the owner of the property or other sources we deem reliable. We have no reason to doubt its accuracy, but we do not guarantee it. All information should be verified prior to lease or purchase.

8235 Forsyth Blvd Ste 210 St Louis MO 63105
Phone 314 994 4444 Fax 314 994 4088
www.naidesco.com

AERIAL VIEW

732-756 Goddard Ave, Chesterfield MO 63005



Contact

NAIDESCO

Commercial Real Estate Services, Worldwide.

John J. Sheahan, Jr., SIOR
314 994 4176 Office
314 402 1031 Mobile
jsheahan@naidesco.com

David Gannon
314 994 2321 Office
314 503 5118 Mobile
dgannon@naidesco.com

The information contained herein has been given to us by the owner of the property or other sources we deem reliable. We have no reason to doubt its accuracy, but we do not guarantee it. All information should be verified prior to lease or purchase.

8235 Forsyth Blvd Ste 210 St Louis MO 63105
Phone 314 994 4444 Fax 314 994 4088
www.naidesco.com