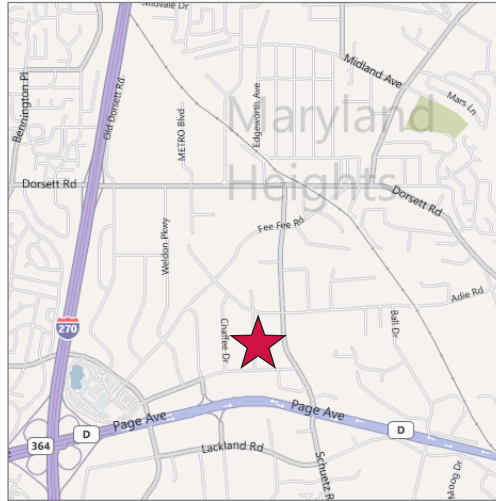


FOR SALE / LEASE

19,010 SF Office / Warehouse

2342-2356 Centerline Industrial, St. Louis MO 63146



Property Highlights

- Prime Westport investment property available
- Office/warehouse perfect for owner/user
- 19,010 SF building, 30% office
- 4 units approx 5,000 SF each
- 5,010 & 4,500 SF suites available
- Equipped with 1 drive-in & 1 loading dock per unit
- Abundant parking

Sale Price / Lease Rate
\$795,000 / **\$5.95 psf MG - new rate**

Contact

Ken Kaller, CCIM
314 994 2328
kkaller@naidesco.com

Michael Wolken, SIOR
314 994 4948
mwolken@naidesco.com



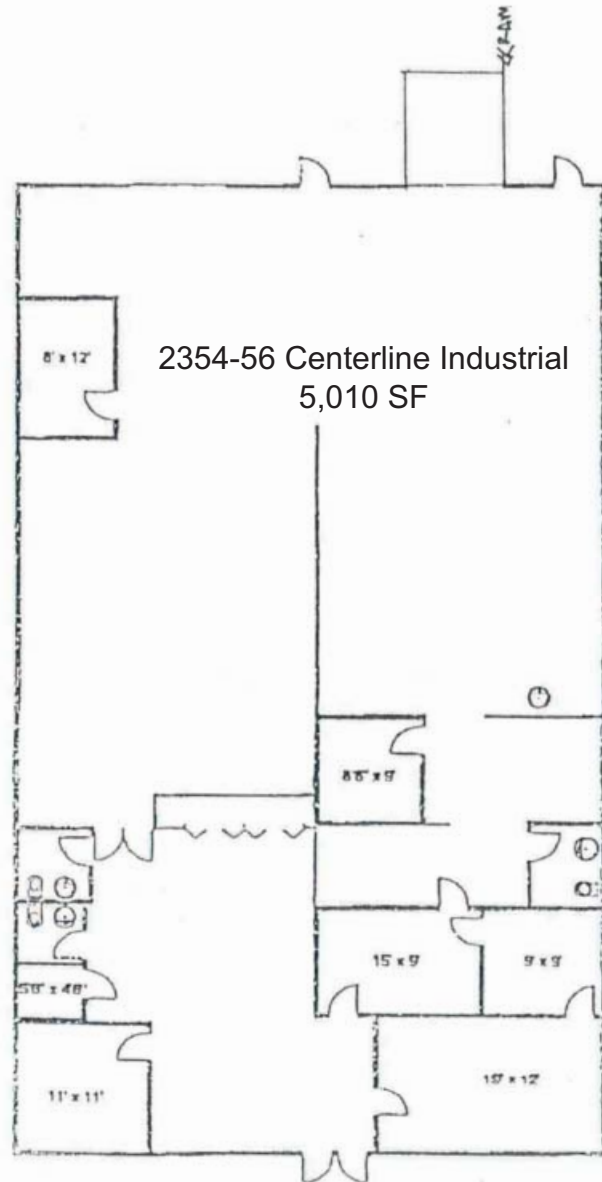
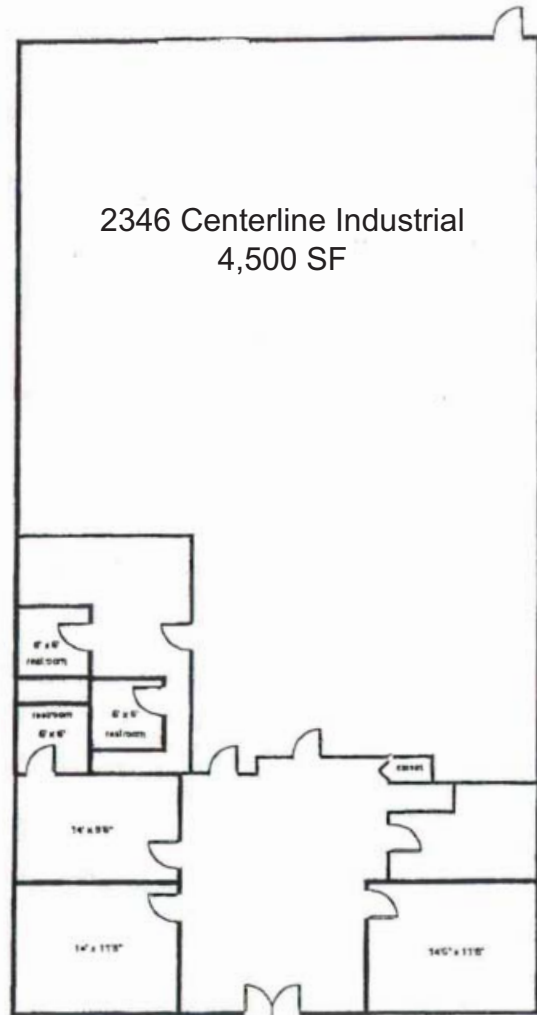
Commercial Real Estate Services, Worldwide.

The information contained herein has been given to us by the owner of the property or other sources we deem reliable. We have no reason to doubt its accuracy, but we do not guarantee it. All information should be verified prior to lease or purchase.

8235 Forsyth Blvd Ste 210 | St Louis MO 63105
Phone 314 994 4444 | Fax 314 994 4088
www.naidesco.com | info@naidesco.com

FLOOR PLANS

2324-2356 Centerline Industrial, St. Louis MO 63146



Contact

NAIDESCO

Commercial Real Estate Services, Worldwide.

Ken Kaller, CCIM
314 994 2328
kkaller@naidesco.com

Michael Wolken, SIOR
314 994 4948
mwolken@naidesco.com

The information contained herein has been given to us by the owner of the property or other sources we deem reliable. We have no reason to doubt its accuracy, but we do not guarantee it. All information should be verified prior to lease or purchase.

8235 Forsyth Blvd Ste 210 | St Louis MO 63105
Phone 314 994 4444 | Fax 314 994 4088
www.naidesco.com | info@naidesco.com