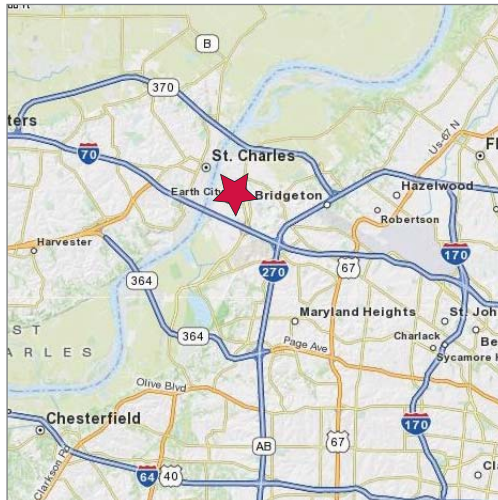


FOR SALE / LEASE

10,150 SF Office / Warehouse Space

13665 Lakefront Drive, Earth City MO 63045



Property Highlights

- 10,150 SF available
- 50% office finish
- One 10'x10' drive-in door
- Additional loading possible
- 3.3:1,000 SF parking
- 26,200 SF building in Earth City Business Park
- Access to I-70, I-270 & I-370

Sale Price / Lease Rate

\$3,200,000 / \$8.05 psf, NNN



Commercial Real Estate Services, Worldwide.

Contact

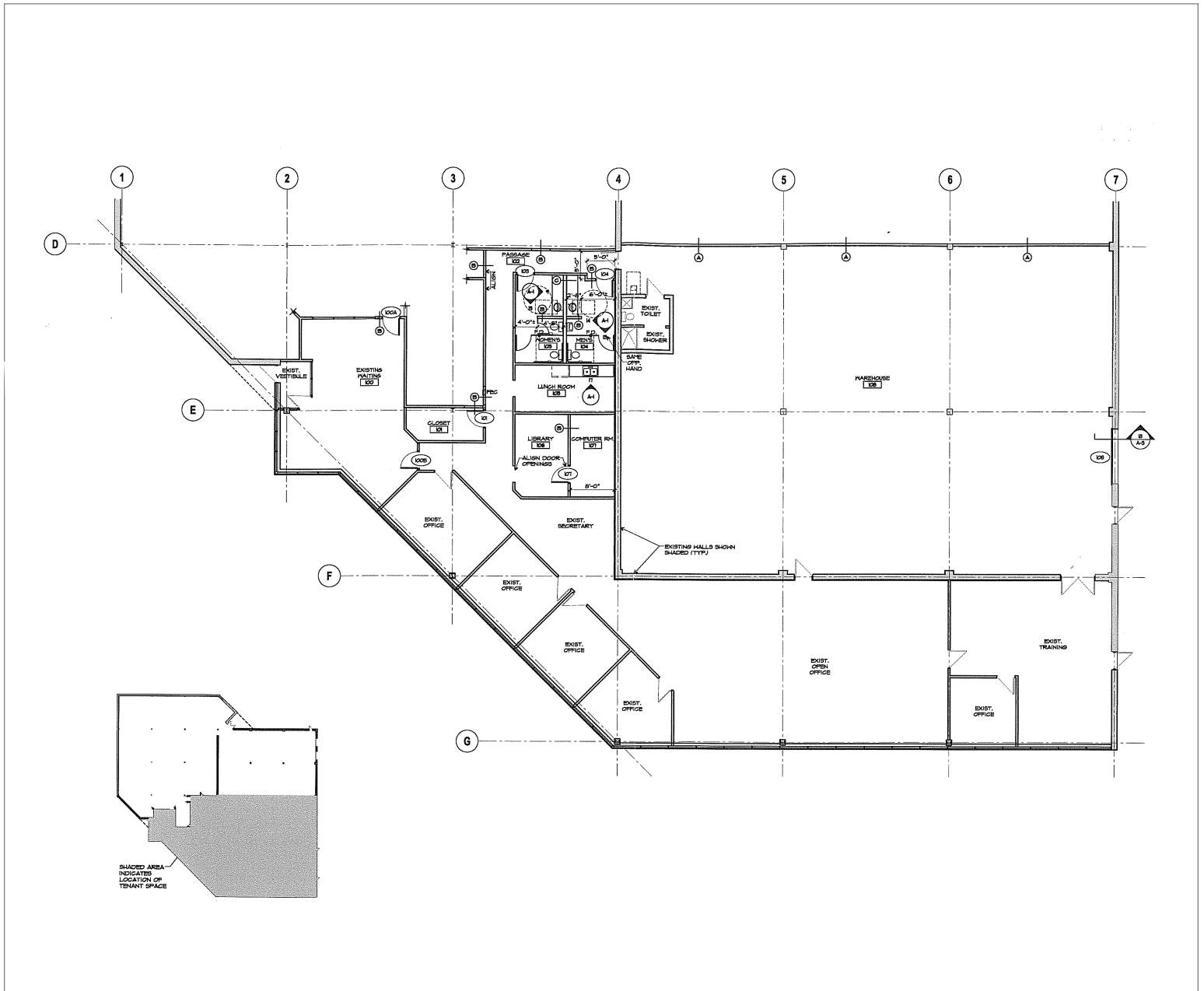
Andy C. Murphy, CCIM
314 994 4093
amurphy@naidesco.com

The information contained herein has been given to us by the owner of the property or other sources we deem reliable. We have no reason to doubt its accuracy, but we do not guarantee it. All information should be verified prior to lease or purchase.

8235 Forsyth Blvd Ste 210 St Louis MO 63105
Phone 314 994 4444 Fax 314 994 4088
www.naidesco.com

FLOOR PLAN

13665 Lakefront Drive, Earth City MO 63045



Contact

Andy C. Murphy, CCIM
314 994 4093
amurphy@naidesco.com



Commercial Real Estate Services, Worldwide.

The information contained herein has been given to us by the owner of the property or other sources we deem reliable. We have no reason to doubt its accuracy, but we do not guarantee it. All information should be verified prior to lease or purchase.

8235 Forsyth Blvd Ste 210 St Louis MO 63105
Phone 314 994 4444 Fax 314 994 4088
www.naidesco.com