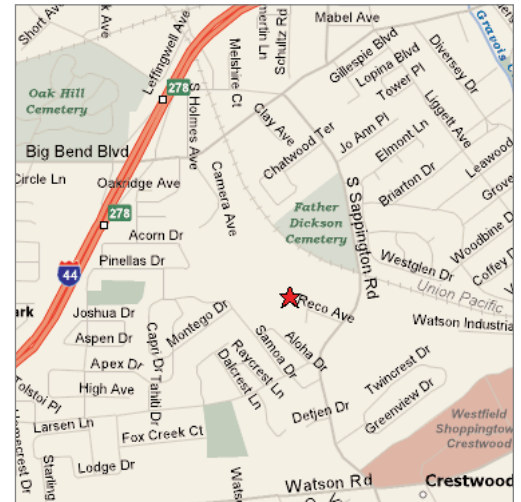


# FOR LEASE

## 12,577 - 28,521 SF Office / Warehouse

1157 - 1173 Reco Avenue, Crestwood MO 63126



© 2003 Sienca Photography

### Property Highlights

- Spaces can be combined for a total of 28,521 SF or leased separately

#### 1157 Reco Avenue

- 12,577 SF office / warehouse
- 3,114 SF office
- 12' ceiling height
- 1 drive-in & 2 docks

#### 1173 Reco Avenue

- 15,944 SF office / warehouse
- 5,298 SF office (can be reduced)
- 11'6" - 16' ceiling height
- 1 dock

### Lease Rate

\$4.25 psf, Gross



Commercial Real Estate Services, Worldwide.

### Contact

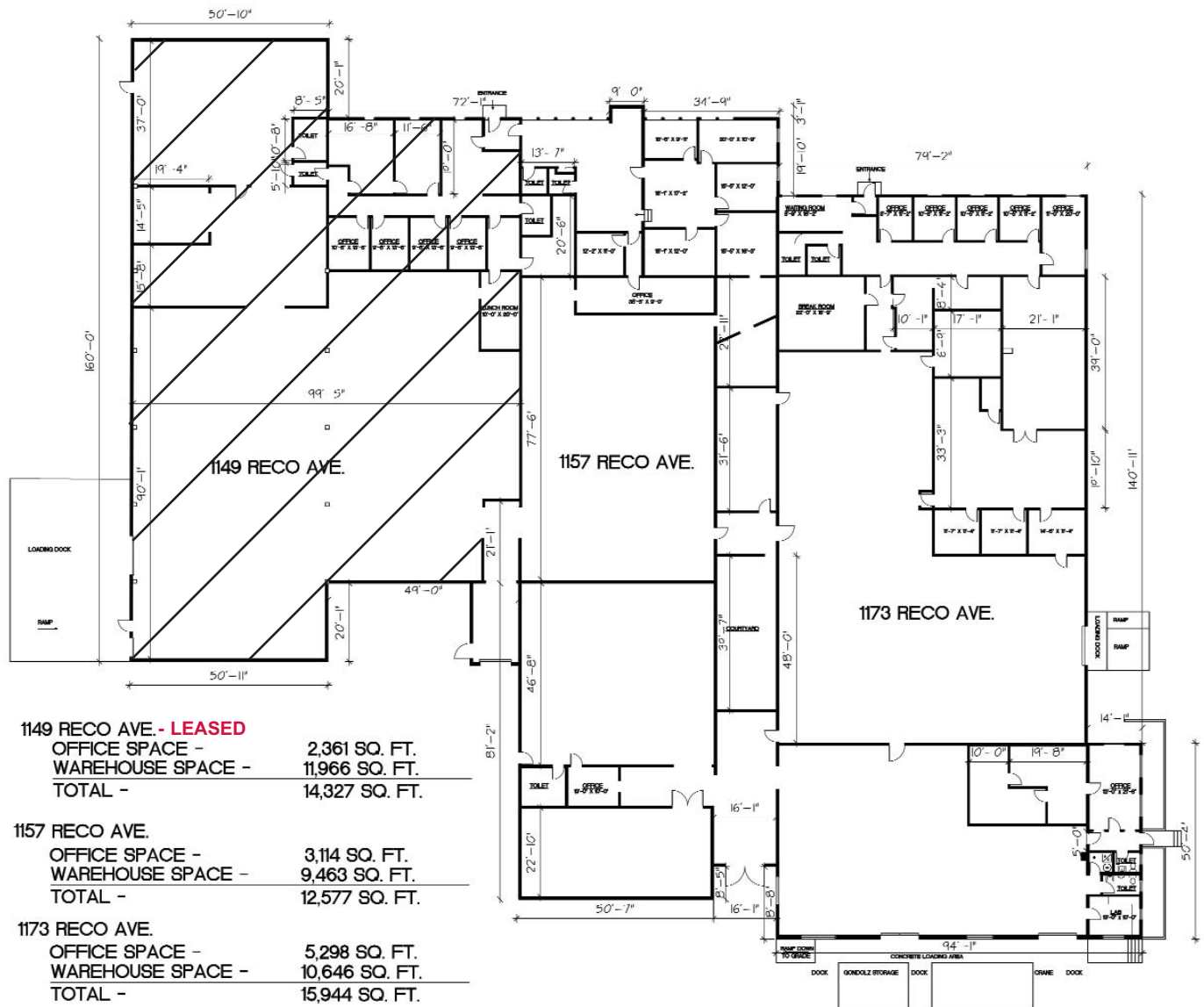
John J. Sheahan, Jr., SIOR  
314 994 4176 office  
314 402 1031 mobile  
jsheahan@naidesco.com

8235 Forsyth Blvd Ste 210 St Louis MO 63105  
Phone 314 994 4444 Fax 314 994 4088  
www.naidesco.com

The information contained herein has been given to us by the owner of the property or other sources we deem reliable. We have no reason to doubt its accuracy, but we do not guarantee it. All information should be verified prior to lease or purchase.

# FLOOR PLAN

1157 - 1173 Reco Avenue, Crestwood MO 63126



## Contact

John J. Sheahan, Jr., SIOR  
 314 994 4176 office  
 314 402 1031 mobile  
[jsheahan@naidesco.com](mailto:jsheahan@naidesco.com)



Commercial Real Estate Services, Worldwide.

The information contained herein has been given to us by the owner of the property or other sources we deem reliable. We have no reason to doubt its accuracy, but we do not guarantee it. All information should be verified prior to lease or purchase.

8235 Forsyth Blvd Ste 210 St Louis MO 63105  
 Phone 314 994 4444 Fax 314 994 4088  
[www.naidesco.com](http://www.naidesco.com)