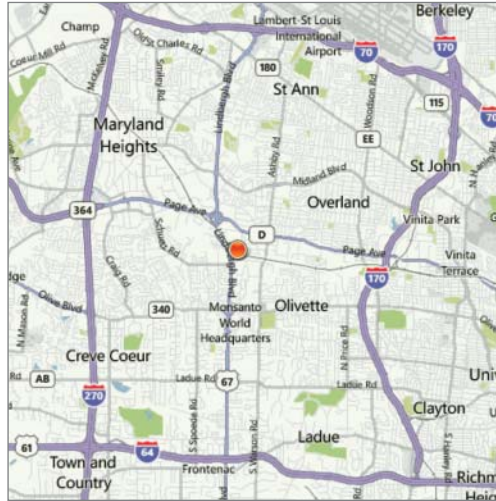


# FOR SALE / LEASE

## 10,473 SF Office / Warehouse Bldg

10854 Midwest Industrial Blvd, St. Louis MO 63132



### Property Highlights

- 10,473 SF building on 0.81 acres
- 4,200 SF office finish
- Features include 14' ceilings, one truck-high dock & 25 car parking
- Zoned M-1
- Easy access to I-170 & I-270
- Near Page, Lindbergh & Olive Blvd

### Sale Price / Lease Rate

\$625,000 / \$5.95 psf, MG



Commercial Real Estate Services, Worldwide.

### Contact

Andy Murphy, CCIM  
314 994 4093  
amurphy@naidesco.com

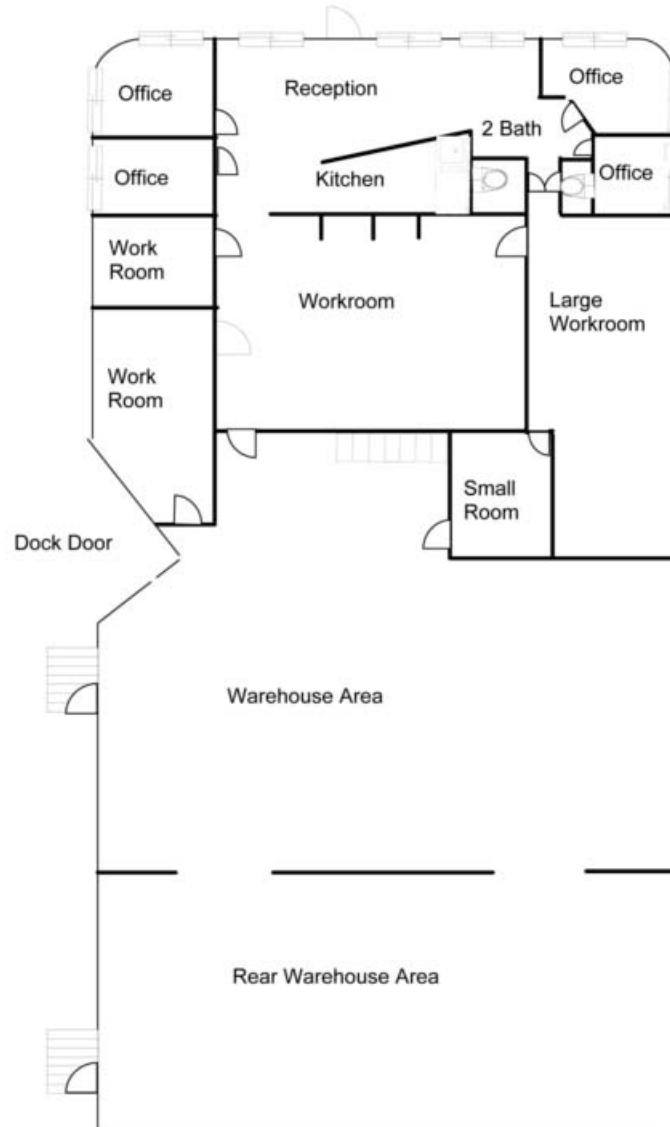
Carl Conceller, SIOR  
314 994 4801  
cconceller@naidesco.com

The information contained herein has been given to us by the owner of the property or other sources we deem reliable. We have no reason to doubt its accuracy, but we do not guarantee it. All information should be verified prior to lease or purchase.

8235 Forsyth Blvd Ste 210 | St Louis MO 63105  
Phone 314 994 4444 | Fax 314 994 4088  
www.naidesco.com | info@naidesco.com

# FLOOR PLAN

10854 Midwest Industrial Blvd, St. Louis MO 63132



**NAIDESCO**  
Commercial Real Estate Services, Worldwide.

## Contact

Andy Murphy, CCIM  
314 994 4093  
amurphy@naidesco.com

Carl Conceller, SIOR  
314 994 4801  
cconceller@naidesco.com

The information contained herein has been given to us by the owner of the property or other sources we deem reliable. We have no reason to doubt its accuracy, but we do not guarantee it. All information should be verified prior to lease or purchase.

8235 Forsyth Blvd Ste 210 | St Louis MO 63105  
Phone 314 994 4444 | Fax 314 994 4088  
www.naidesco.com | info@naidesco.com